

SFR 05/2008**26 February 2008****Coverage: England****Theme: Education and
Training**

Issued by
Department for Children,
Schools and Families
Sanctuary Buildings
Great Smith Street
London SW1P 3BT

Telephone:
Press Office
020 7925 6789
Public Enquiries
0870 000 2288

Statistician
Andrew Clarke

Email
info@dcsf.gsi.gov.uk

Internet
[http://www.dcsf.gov.uk/
rsgateway/DB/SFR/](http://www.dcsf.gov.uk/rsgateway/DB/SFR/)

PUPIL ABSENCE IN SCHOOLS IN ENGLAND, INCLUDING PUPIL CHARACTERISTICS: 2006/07

INTRODUCTION

This Statistical First Release (SFR) reports on absence in primary, secondary and special schools, city technology colleges and academies during the 2006/07 school year. It updates and supplements information published in SFR 36/2007 in October 2007. It is based on pupil level absence data collected via the School Census. The release provides information on the levels of absence (authorised, unauthorised and overall) by type of school; absence rates by pupil characteristics (such as gender, free school meal eligibility, ethnic group and special educational needs); the percentage of pupils by number of days absence; as well as summary statistics on persistent absentees (the percentage of absence these pupils account for; their characteristics; and the number of schools where the percentage of persistent absentees falls within certain ranges). Information on the reasons for absence is included in this release for the first time.

KEY POINTS

ABSENCE RATES

- The percentages of half days missed due to absence in primary, secondary and special schools in England for 2006/07, reported via the School Census, are as follows:

Authorised Absence	5.49 per cent
Unauthorised Absence	1.00 per cent
Overall Absence	6.49 per cent

- The rate of overall absence in primary schools was 5.18 per cent (compared with 5.76 per cent in 2005/06, as reported via the Absence in Schools Survey). The rate for all secondary schools was 7.87 per cent (8.24 per cent in 2005/06). The rate for special schools was 10.62 per cent (compared with 10.59 per cent reported for the previous year via the Absence in Schools Survey). (Table 1.1)

REASON FOR ABSENCE

This is the first full year for which information on the reasons for absence is available. It is not compulsory for schools to provide reason for absence data – it is dependant on the software used by schools to collate their attendance data. In 2006/07, some 93 per cent of schools provided reason codes for all pupil absence. See Notes to Editor 10.



- Within the overall absence rate of 6.49 per cent, 3.47 per cent of days were recorded as **illness**. Illness rates are highest in secondary schools. Higher rates of absence due to illness were reported for those pupils known to be eligible for free school meals. The rate of absence due to illness is higher amongst girls than boys. (Tables 2.1 and 2.2)
- The second most commonly reported reason for absence was **family holiday** which includes the following reason codes: agreed family holiday; agreed extended family holiday and unauthorised absence, family holiday not agreed. Absence for family holidays accounted for 0.70 per cent of days – this equates to around 6.8 million school days. Around 90 per cent of these days were authorised by the school. (Table 2.1)
- Pupils were recorded **late** on 0.07 per cent of sessions. (Table 2.1)

DISTRIBUTION OF ABSENCE

- Per pupil, the average total absence in primary schools was just under 8 school days (around 15 half days); in secondary schools it was almost 12 school days (just over 23 half days); and in special schools the figure was almost 15 school days (around 30 half days).
- Almost 7 per cent of pupil enrolments had no absence from school in 2006/07. (Table 3.1)
- Less than 18 per cent of pupil enrolments account for over half the total number of absent sessions. (Table 3.1)
- Some 7 per cent of enrolments had more than 25 days absence from school in 2006/07. This accounted for around 30 per cent of the total absence from schools. (Table 3.1)

PERSISTENT ABSENTEES

A Persistent Absentee (PA) is defined as having more than 63 sessions of absence during the year (typically they are absent for more than 20 per cent of the time).

- In 2006/07 there were around 272,950 PAs in primary, secondary and special schools (4 per cent of enrolments). In primary schools PAs accounted for almost 2 per cent of enrolments; in secondary schools this was nearly 7 per cent and in special schools it was over 11 per cent. Compared with the previous years, the percentage of PAs has decreased in secondary schools. (Table 4.1)
- The rate of overall absence for PAs is 35.07 per cent, which is over 5 times higher than the rate for all pupils. (Table 4.1)
- In 2006/07 some 4.2 per cent of girls in primary, secondary and special schools were PAs. This is slightly higher than the proportion of boys who were PAs. (Table 4.2)
- The occurrence of PAs was higher amongst pupils who are known to be eligible for free school meals (FSM). In 2006/07, some 9 per cent of pupils who were known to be eligible for FSM were PAs, compared with around 3 per cent for the rest of the school population. (Table 4.2)

- The percentage of PAs increases as pupils progress through school. The highest percentage of PAs is in national curriculum year group 11, where some 11 per cent of enrolments were PAs. (Table 4.2)
- The percentage of PAs was highest for the Traveller of Irish Heritage (almost 42 per cent of all Traveller of Irish Heritage children were PAs); Gypsy/Roma (some 31 per cent) and Mixed (White and Black Caribbean) (just over 6 per cent) ethnic groups. The percentage of PAs for Minority Ethnic pupils was significantly below the rate for White British pupils. The percentage of PAs for all pupils was 4 per cent. Caution is recommended in interpreting the data for Traveller of Irish Heritage children and Gypsy/Roma children due to potential under-reporting for these ethnic classifications. (Table 4.3)
- In 2006/07 there were 28 secondary schools where 20 per cent or more of the school population were PAs. In almost a third of all secondary schools, the percentage of the school population who are PAs falls between 3 and 6 per cent. In most primary schools (81 per cent), up to 3 per cent of the school population are PAs. (Table 4.4)

ABSENCE BY PUPIL CHARACTERISTICS

- The overall absence rate for girls is slightly higher than that for boys. In 2006/07 the overall absence rate for girls across primary, secondary and special schools was 0.13 percentage points more than that for boys. (Table 5.1)
- Pupils who are known to be eligible for free school meals (FSM) have higher rates of absence. The overall absence rate for those pupils known to be eligible for FSM was around 9 per cent compared with less than 6 per cent for those who were not, with the difference being greater amongst boys. In general, schools with higher levels of deprivation (as measured by FSM rates) had higher levels of absence. There were many schools which did not follow this trend. (Table 5.1 and Chart 7.3)
- Absence rates were highest for the traveller of Irish Heritage (25.99 per cent overall absence); Gypsy/Roma (20.13 per cent overall absence) and Mixed (White and Black Caribbean) (7.60 per cent overall absence) ethnic groups. The rate of overall absence for pupils of White and Mixed ethnic origin was above the national average; for pupils of Asian, Black and Chinese ethnic origin it was below the national average. The rate of overall absence for Minority Ethnic pupils was significantly below the rate for White British pupils. The overall absence rate for all pupils was 6.49 per cent. Caution is recommended in interpreting the data for Traveller of Irish Heritage children and Gypsy/Roma children due to potential under-reporting for these ethnic classifications. (Table 5.2)
- The rate of overall absence increases by national curriculum year group, as shown in **Chart C**. Rates of overall absence were highest for pupils in national curriculum year group 11 and pupils in national curriculum year groups 12 and above. The rate of overall absence for pupils in national curriculum year group 11 (10.26 per cent) was almost twice the rate of overall absence for those pupils in national curriculum year group 7 (5.91 per cent). (Table 5.3)
- Looking at overall absence rates by first language, the lowest rates of absence were amongst those pupils whose first language was known or believed to be other than English. (Table 5.4)
- Looking at absence rates by special educational needs, the highest rates of overall absence were amongst those pupils at *School Action Plus*. The absence rate for pupils at *School Action Plus* was almost twice that for those pupils with no identified special educational needs. (Table 5.5)

ACADEMIES

- Although 47 academies were open in autumn 2006, only 27 had been open long enough to return absence data for the 2005/06 and the 2006/07 academic years. For those 27 academies the rate of overall absence has fallen from 9.05 per cent to 8.30 per cent. The percentage of Persistent Absentees has also fallen, from 9.0 per cent to 8.2 per cent. (Table 6.1)

LOCAL AUTHORITY ANALYSIS

- The rate of overall absence in maintained primary schools by local authority ranged from 4.29 per cent (Trafford LA) to 6.39 per cent (Sandwell LA); and in maintained secondary schools from 6.10 per cent (Rutland LA) to 10.65 per cent (Kingston Upon Hull LA). (Excludes primary schools in South Tyneside and City of London LAs – see Notes to Editor 16.)
- The rate of PAs in maintained primary schools by local authority ranged from 0.5 per cent (Isles of Scilly LA) to 3.5 per cent (Manchester LA); and in maintained secondary schools from 3.9 per cent (Bedfordshire LA) to 12.5 per cent (Manchester LA). (Excludes primary schools in South Tyneside and City of London LAs – see Notes to Editor 16.)

CHARTS

- Chart A** Primary, Secondary and Special Schools: Percentage of enrolments by overall absence rates, England 2006/07
- Chart B** Primary, Secondary and Special Schools: Overall absence rates by sector, England 2006/07
- Chart C** Primary, Secondary and Special Schools: Overall absence rates by national curriculum year group, England 2006/07
- Chart D** Primary, Secondary and Special Schools: Absence rates by gender where reason for absence is illness, England 2006/07
- Chart E** Primary, Secondary and Special Schools: Percentage of enrolments taking holidays by length of holidays, England 2006/07

TABLES

- Table 1.1** Primary, Secondary and Special Schools: Pupil absence by type of school, England 2006/07
- Table 2.1** Primary, Secondary and Special Schools: Absence by reason, England 2006/07
- Table 2.2** Primary, Secondary and Special Schools: Absence due to illness by free school meal eligibility, England 2006/07
- Table 2.3** Primary, Secondary and Special Schools: Absence by reason for persistent absentees, England 2006/07
- Table 3.1** Primary, Secondary and Special Schools: Distribution of enrolments by length of overall absence, England 2006/07

Table 3.2	Primary, Secondary and Special Schools: Percentage of enrolments by their overall absence rates, England 2006/07
Table 4.1	Primary, Secondary and Special Schools: Persistent absentees, England 2006/07
Table 4.2	Primary, Secondary and Special Schools: Characteristics of persistent absentees, England 2006/07
Table 4.3	Primary, Secondary and Special Schools: Persistent absentees by ethnic group, England 2006/07
Table 4.4	Primary, Secondary and Special Schools: Number of schools by the percentage of persistent absentees, England 2006/07
Table 5.1	Primary, Secondary and Special Schools: Pupil absence by gender and free school meal eligibility, England 2006/07
Table 5.2	Primary, Secondary and Special Schools: Pupil absence by ethnic group, England 2006/07
Table 5.3	Primary, Secondary and Special Schools: Pupil absence by national curriculum year group, England 2006/07
Table 5.4	Primary, Secondary and Special Schools: Pupil absence by first language, England 2006/07
Table 5.5	Primary, Secondary and Special Schools: Pupil absence by special educational needs, England 2006/07
Table 6.1	Analysis of Academies With Results in Both 2005/06 and 2006/07: Pupil absence, England 2005/06 and 2006/07
Table 6.2	All Academies: Pupil absence, England 2005/06 and 2006/07

ADDITIONAL INFORMATION

Supplementary tables, including figures at Local Authority (LA) and Government Office Region (GOR) level are available on the DCSF statistics website:

<http://www.dcsf.gov.uk/rsgateway/DB/SFR/s000775/index.shtml>

Table 7.1	Primary, Secondary and Special Schools: Pupil absence by type of school, By Local Authority Area and Government Office Region 2006/07
Table 7.2	Maintained Secondary Schools: Rates of overall absence and persistent absentees, By Local Authority Area and Government Office Region 2006/07
Chart 7.3	Primary and Secondary Schools: Relationship between proportion of pupils known to be eligible for free school meals in a school and its overall absence rates, England 2006/07
Chart 7.4	Primary, Secondary and Special Schools: Overall absence rates for pupils known to be eligible for free school meals with special educational needs who are of minority ethnic origin, England 2006/07

- Table 7.5** Primary, Secondary and Special Schools: Absence by reason and special educational need, England 2006/07
- Table 7.6** Primary, Secondary and Special Schools: Absence rates by type of special educational need, England 2006/07
- Table 7.7** Primary, Secondary and Special Schools: Absence rates within the gifted and talented cohort, England 2006/07
- Table 7.8** Primary, Secondary and Special Schools: Absence by reason and national curriculum year group, England 2006/07

NOTES TO EDITORS

Definitions

1. The more reliable measures of absence are deemed to be rates of overall absence, persistent absentees and reason for absence rather than rates of authorised and unauthorised absence. The decision to authorise an absence is a local decision leading to unmeasured variation both between and within schools. In addition, some 4 per cent of all possible sessions missed were due to “unauthorised absence – no reason yet”. Until the reason for absence is known, schools should record a pupil as “unauthorised absence – no reason yet”. So some cases of unauthorised absence may change to authorised absence at a later stage (once an explanation has been reported to the school). However, if the reason for absence is supplied to the school after the School Census database has closed, the absence will still be recorded as “unauthorised absence – no reason yet”. Using overall absence rates and the rate of persistent absentees removes variation and gives more suitable data for performance reporting. Both sets of measures are given in this release, although limitations in comparing rates of authorised and unauthorised absence should be noted.
2. The Department for Children, Schools and Families (DCSF) published specific guidance on the categorisation of attendance and absence in February 2005 when it launched the new codes as part of the collection of absence data via the School Census. This guidance was revised when the 2006 Pupil Registration regulations came into force on 1 September 2006 and was published alongside “Keeping Pupil Registers” which is guidance on applying the regulations. The guidance is available at www.dcsf.gov.uk/schoolattendance/legislation.
3. In law, parents of children of compulsory school age (aged 5 to 15 at the start of the school year) are required to ensure that they receive a suitable education by regular attendance at school or otherwise. Failure to comply with this statutory duty can lead to prosecution. LAs are responsible in law for making sure that pupils attend school.
4. Schools are required to take attendance registers twice a day: once at the beginning of the morning session and once during the afternoon session. In their register, schools are required to distinguish whether pupils are present, engaged in an approved educational activity or are absent. Where a day pupil of compulsory school age is absent, schools have to indicate in their register whether the absence is authorised by the school or unauthorised.
5. Authorised absence is absence with permission from a teacher or other authorised representative of the school. This includes instances of absences for which a satisfactory explanation has been provided (for example, illness).
6. Unauthorised absence is absence without permission from a teacher or other authorised representative of the school. This includes all unexplained or unjustified absences. Arriving late for school, after the register has closed, is recorded as unauthorised absence.

Data Collection

7. Prior to 2005/06 the Department's main source of absence data was the Absence in Schools Survey which was conducted in May each year and collected the number of day pupils of compulsory school age together with information on the number of sessions missed due to authorised and unauthorised absence from maintained primary, secondary, all special and independent schools, city technology colleges and academies in England. Findings from the 2005/06 survey have been published in SFR 35/2006 available at: <http://www.dcsf.gov.uk/rsgateway/DB/SFR/s000679/index.shtml>. Coverage of the 2006/07 survey was reduced to primary schools only. These findings have not been published as national statistics but have been used to validate data collected via the School Census (see Notes to Editors 9).

8. In 2006 the School Census (SC) started to collect pupil level absence data on a termly basis (spring, summer and autumn collections) from maintained secondary schools, city technology colleges and academies relating to absence during the 2005/06 school year. For the 2006/07 school year the scope of collection was extended to also include maintained primary schools and special schools.
9. Absence data for primary schools in 2006/07 collected via the Absence in Schools Survey provides very similar absence rates (authorised, unauthorised and overall) to those derived from data collected via the School Census. A comparison of figures derived from the two sets of data is given in the table:

**MAINTAINED PRIMARY SCHOOLS:
COMPARISON OF ABSENCE DATA COLLECTED VIA THE ABSENCE IN
SCHOOLS SURVEY AND THE SCHOOL CENSUS**

2006/07
England

	Absence in Schools Survey	School Census
Maintained Primary Schools		
Number of day pupils of compulsory school age	..	3,306,900
Number of enrolments	3,439,020	3,463,120
Percentage of half days missed:		
authorised absence	4.68	4.66
unauthorised absence	0.51	0.52
overall absence	5.18	5.18

.. Not available

At school level the variation in authorised absence rate between both collections is low – 94 per cent of schools show a difference of less than one percentage point. This pattern is also reflected in unauthorised absence rates.

10. Reason for absence was collected for the first time for the autumn term 2006. Schools were able to provide absence data using a reason code or by using total figures for the number of sessions missed due to authorised or unauthorised absence. It was not expected that schools would use both. However, one software supplier enabled both absences by reason and total authorised and unauthorised absence to be returned. Some 2.4 per cent of schools have provided both a breakdown of absence by reason and totals. In addition, some schools do not have the required software to provide absence data by reason, and therefore are only able to provide overall totals. To derive absence rates, the sum of absence by reason has been used unless this is missing or is less than the total provided, in which case overall totals have been used.

Data Coverage and Quality

11. Schools have provided, via the SC, individual level attendance data relating to the autumn 2006, spring 2007 and first half of the summer 2007 terms for pupils aged 5 to 15 (at the start of the school year) who are non-boarders. In each term the SC has collected the number of possible sessions of attendance; the number of sessions missed broken down by reason for absence and overall totals of sessions missed due to authorised and unauthorised absence.
12. The SC collects information for a pupil's attendance in the term prior to the census. For example, the

spring SC collects information on absence during the previous autumn term. Absence data for the 2006/07 year have been derived by linking pupil records collected in the spring 2007 SC, summer 2007 SC and autumn 2007 SC to derive overall annual totals for the number of possible sessions; the number of sessions missed by reason for absence and the number of sessions missed due to authorised and unauthorised absence for each enrolment. Pupil characteristic data are not collected retrospectively. For example, the autumn 2007 SC collects a pupil's national curriculum year group as at autumn 2007 together with their attendance in the previous summer 2007 term. Derived annual absence totals have been linked to characteristic data collected in the spring SC. Where characteristic data are missing in the spring SC, information collected in the summer SC has been used.

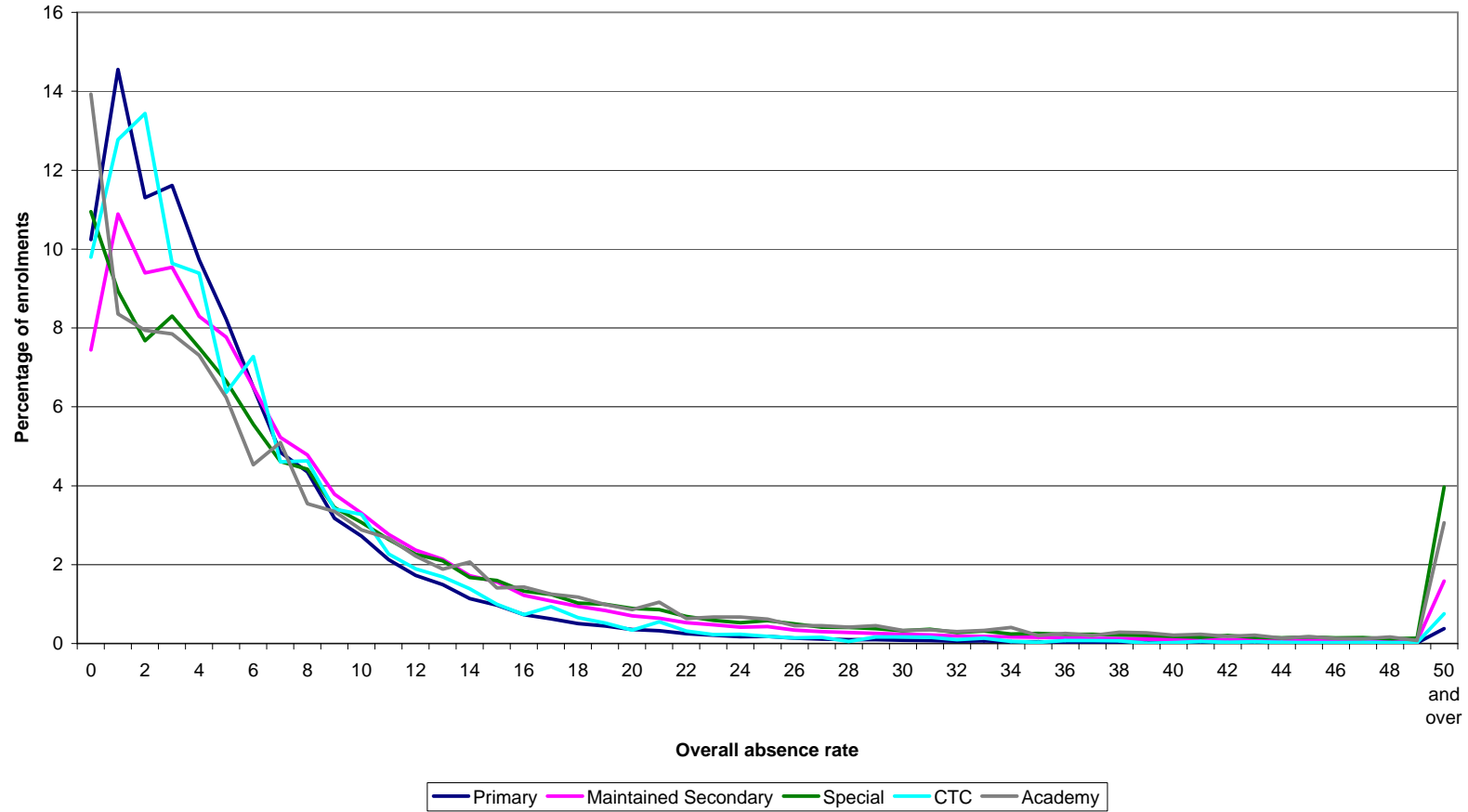
13. Information relating to pupil absence relates to the number of pupil enrolments rather than the number of pupils. Where a pupil has moved school throughout the year, they will be counted more than once as they have recorded attendance in more than one school. Pupil absence is recorded for the period a pupil is enrolled at the school.
14. For a pupil enrolment, if the number of possible sessions in a term is zero/missing or is less than the total number of sessions missed due to overall absence, or if the total number of possible sessions exceeds the limit for the term, then the absence variables have been set to zero for that term only, and that term's information has been discounted from this SFR. If the total number of possible sessions for each and every term equals zero, then the enrolment has not been included.
15. The information provided in this release is for 2.5 terms of the 2006/07 academic year. Data relating to the summer term is only required up until the Friday before the Spring Bank Holiday at the end of May, rather than the full term. Schools which closed during the 2006/07 year, for which data are available, have been included.
16. The information in this SFR is based on data returned by schools as part of the School Census. It does not include data which has been submitted by local authorities or schools outside of the School Census collection. One local authority, South Tyneside, had software related problems which prevented their primary schools returning absence data. Data for primary schools in this authority are therefore not included in this release. City of London Local Authority has not provided absence data for their one primary school.
17. The data presented here are based on attendance registers which are taken twice a day: once at the beginning of the morning session and once during the afternoon session. It therefore does not include "internal unauthorised absence". This is defined as unauthorised absence by pupils between the school's twice-daily registrations, i.e. a pupil is recorded as attending during morning or afternoon registration but is physically not present at another part of the relevant session. The Department's current data systems are limited insofar as they only record and measure the registrations, not any subsequent absence.
18. The data contained in this SFR relates only to those pupils on the roll of a LA maintained primary school or secondary school, city technology college, academy or special school. It does not include those children who are not registered at a school.

General

19. This is a National Statistics publication. National Statistics are produced to high professional standards set out in the National Statistics Code of Practice. They undergo regular quality assurance reviews to ensure they meet customer needs. They are produced free from any political interference.
20. Further information, including local authority level analyses are available through the following link:-
<http://www.dcsf.gov.uk/rsgateway/DB/SFR/s000775/index.shtml>

21. Enquiries (non-media) about information contained in this release should be addressed to Schools Data Unit, Room 1F Area E, Mowden Hall, Staindrop Road, Darlington, Co Durham, DL3 9BG or e-mail schools.statistics@dcsf.gsi.gov.uk.
22. Media enquiries about information contained in this Statistical First Release should be made to the Department's Press Office at DCSF, Sanctuary Buildings, Great Smith Street, London, SW1P 3BT or telephone 020 7925 6789.

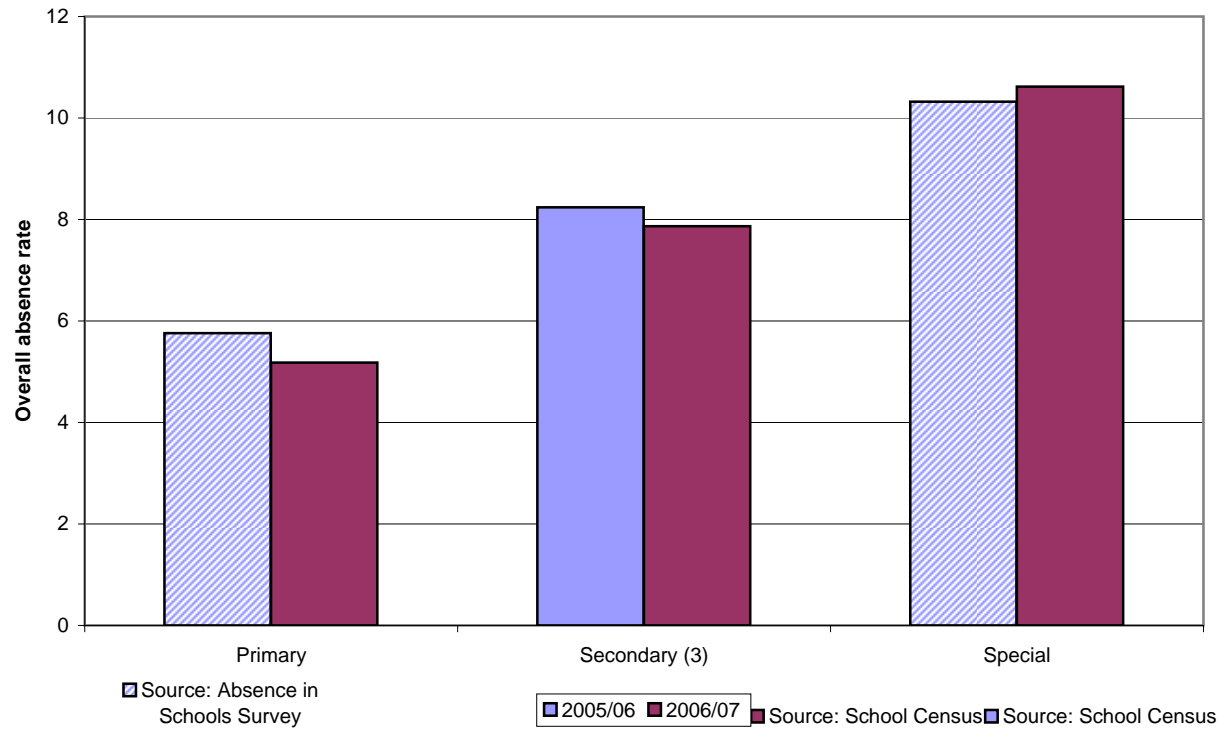
Chart A
PRIMARY, SECONDARY AND SPECIAL SCHOOLS (1)(2)(3):
PERCENTAGE OF ENROLMENTS BY OVERALL ABSENCE RATES
 2006/07
 England



(1) Includes middle schools as deemed.

(2) Includes maintained and non-maintained special schools. Excludes general hospital schools.

Chart B
PRIMARY, SECONDARY AND SPECIAL SCHOOLS (1)(2)(3):
OVERALL ABSENCE RATES BY SECTOR
 2005/06 and 2006/07
 England



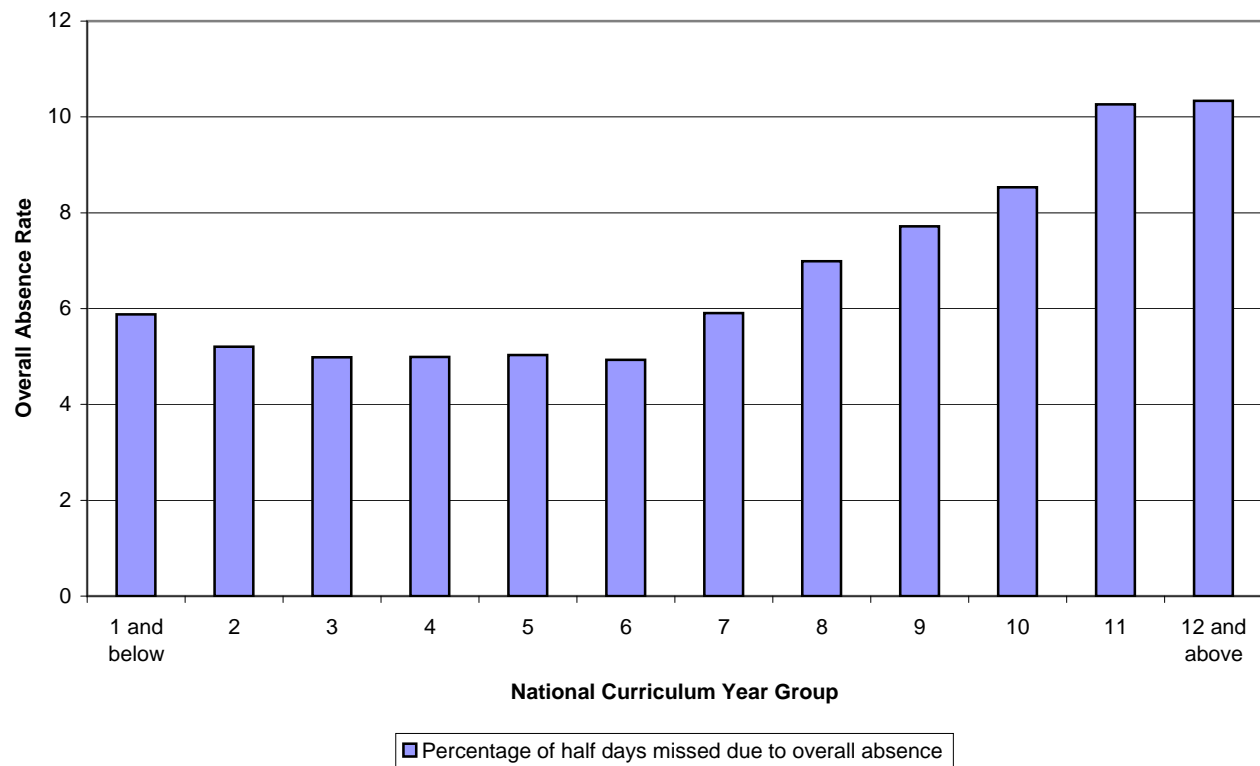
- (1) Includes middle schools as deemed.
- (2) Includes maintained and non-maintained special schools. Excludes general hospital schools.
- (3) Includes maintained secondary schools, city technology colleges and academies (including all through academies).

Chart C

**PRIMARY, SECONDARY AND SPECIAL SCHOOLS(1)(2)(3):
OVERALL ABSENCE RATES BY NATIONAL CURRICULUM YEAR GROUP**

2006/07

England



(1) Includes middle schools as deemed.

(2) Includes maintained and non-maintained special schools. Excludes general hospital schools.

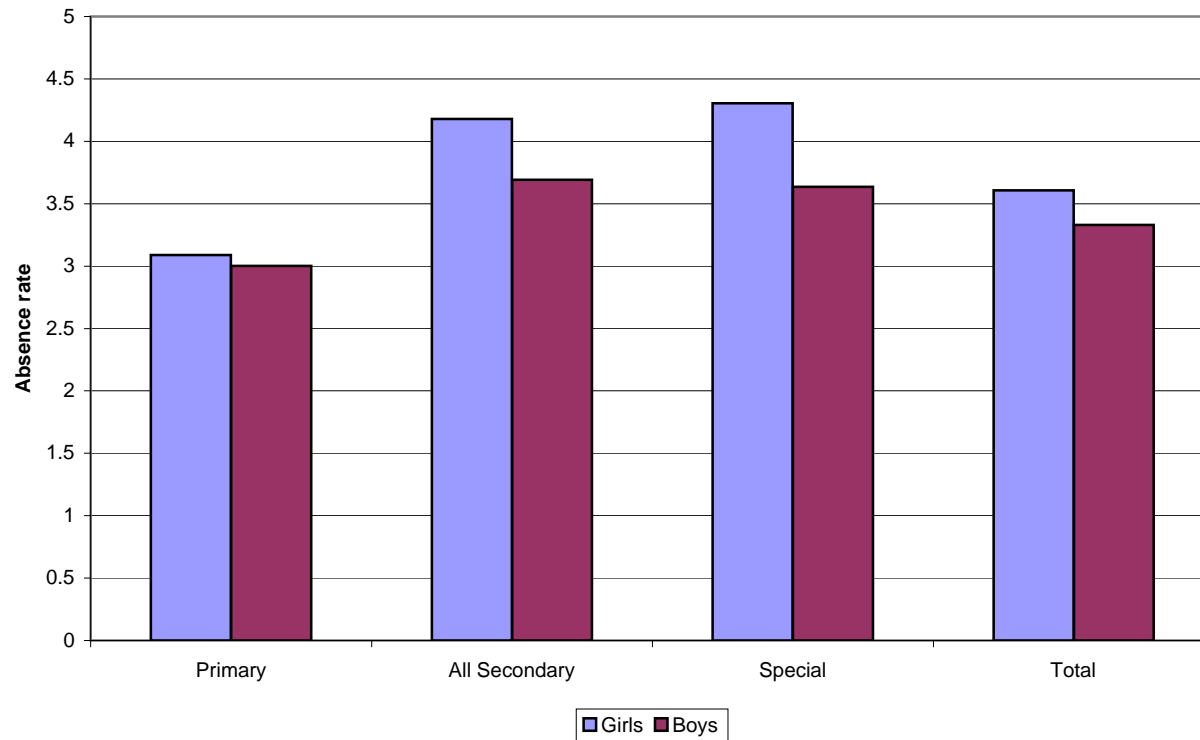
(3) Includes maintained secondary schools, city technology colleges and academies (including all-through academies).

Chart D

**PRIMARY, SECONDARY AND SPECIAL SCHOOLS (1)(2)(3):
ABSENCE RATES BY GENDER WHERE REASON FOR ABSENCE IS ILLNESS**

2006/07

England

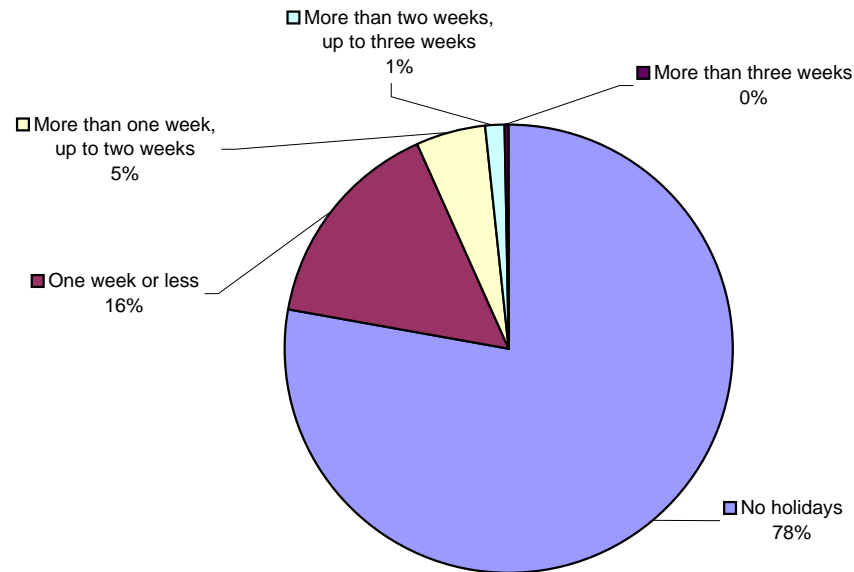


(1) Includes middle schools as deemed.

(2) Includes maintained and non-maintained special schools. Excludes general hospital schools.

(3) Includes maintained secondary schools, city technology colleges and academies (including all-through academies).

Chart E
PRIMARY, SECONDARY AND SPECIAL SCHOOLS (1)(2)(3):
PERCENTAGE OF ENROLMENTS TAKING HOLIDAYS BY LENGTH OF HOLIDAYS (4)(5)
2006/07
England



- (1) Includes middle schools as deemed.
- (2) Includes maintained and non-maintained special schools. Excludes general hospital schools.
- (3) Includes maintained secondary schools, city technology colleges and academies (including all-through academies).
- (4) Cumulative total of agreed family holiday; agreed extended family holiday and family holiday not agreed for each enrolment.
- (5) Excludes enrolments for whom no absence data were classified by reason for absence.

Table 1.1
PRIMARY, SECONDARY AND SPECIAL SCHOOLS (1)(2):
PUPIL ABSENCE BY TYPE OF SCHOOL
1996/97 to 2006/07
England

	1996/97	1997/98	1998/99	1999/00	2000/01	2001/02	2002/03	2003/04	2004/05	2005/06	A (3)	B (4)
Total												
Number of day pupils of compulsory school age (5)	6,654,070	6,611,130	6,699,580	6,728,210	6,791,270	6,800,360	6,793,940	6,768,720	6,704,920	6,568,160		6,332,070
Number of pupil enrolments (6)		6,582,430
Percentage of half days missed due to (7):												
Authorised absence	6.67	6.68	6.47	6.27	6.68	6.43	6.25	5.96	5.77	6.05		5.49
Unauthorised absence	0.73	0.78	0.77	0.74	0.76	0.75	0.74	0.76	0.81	0.92		1.00
Overall absence	7.41	7.46	7.24	7.01	7.44	7.19	6.98	6.72	6.58	6.96		6.49
Maintained Primary Schools												
Number of day pupils of compulsory school age (5)	3,770,800	3,730,360	3,734,770	3,719,190	3,741,370	3,704,090	3,665,170	3,617,430	3,565,050	3,509,550		3,306,900
Number of pupil enrolments (6)		3,463,120
Percentage of half days missed due to (7):												
Authorised absence	5.58	5.71	5.39	5.19	5.59	5.40	5.38	5.08	5.00	5.30		4.66
Unauthorised absence	0.48	0.50	0.49	0.47	0.49	0.45	0.43	0.41	0.43	0.45		0.52
Overall absence	6.06	6.21	5.89	5.66	6.08	5.85	5.81	5.49	5.43	5.76		5.18
Maintained Secondary Schools												
Number of day pupils of compulsory school age (5)	2,790,040	2,786,940	2,872,670	2,917,640	2,956,920	3,003,650	3,033,170	3,050,590	3,037,010	2,951,570		2,906,370
Number of pupil enrolments (6)	3,024,730		2,983,780
Percentage of half days missed due to (7):												
Authorised absence	8.06	7.91	7.81	7.58	7.98	7.63	7.21	6.92	6.58	6.82		6.36
Unauthorised absence	1.01	1.10	1.07	1.04	1.07	1.09	1.07	1.13	1.23	1.42		1.50
Overall absence	9.07	9.01	8.88	8.62	9.04	8.72	8.28	8.05	7.81	8.24		7.86
Special Schools (2)												
Number of day pupils of compulsory school age (5)	80,920	81,180	79,390	78,480	79,920	79,410	79,190	78,340	76,750	75,550		72,810
Number of pupil enrolments (6)		77,230
Percentage of half days missed due to (7):												
Authorised absence	8.68	8.60	8.55	8.30	9.15	8.88	8.85	8.64	8.61	8.79		8.55
Unauthorised absence	2.56	2.69	2.48	2.17	2.29	2.10	1.98	1.86	1.87	1.80		2.07
Overall absence	11.24	11.29	11.02	10.48	11.44	10.98	10.83	10.50	10.48	10.59		10.62
City Technology Colleges												
Number of day pupils of compulsory school age (5)	12,310	12,650	12,750	12,900	13,060	13,210	13,640	12,490	12,530	9,430		8,730
Number of pupil enrolments (6)	9,560		8,860
Percentage of half days missed due to (7):												
Authorised absence	6.13	6.10	5.79	5.93	6.16	6.19	5.49	5.20	4.69	5.45		5.55
Unauthorised absence	0.20	0.10	0.13	0.20	0.21	0.21	0.23	0.26	0.22	0.35		0.33
Overall absence	6.33	6.20	5.92	6.13	6.37	6.40	5.72	5.46	4.91	5.81		5.88
Academies (8)												
Number of day pupils of compulsory school age (5)	2,770	9,880	13,580	22,050	21,540	37,250
Number of pupil enrolments (6)	22,040	24,230	49,440
Percentage of half days missed due to (7):												
Authorised absence	7.11	7.86	6.90	6.63	6.16	6.51
Unauthorised absence	3.05	3.04	2.83	2.42	2.13	2.98
Overall absence	10.15	10.89	9.74	9.05	8.30	9.49

Source: Absence in Schools Survey and School Census (9)

- (1) Includes middle schools as deemed.
(2) Includes maintained and non-maintained special schools. Excludes general hospital schools, independent special schools and independent schools approved for SEN pupils. Previously published figures for 1996/97 to 2005/06 included independent special schools and independent schools approved for SEN pupils and will therefore differ from those in Table 1.1.
(3) Due to the significant number of new academies in 2006/07, column A has been created to present comparable figures with 2005/06. Includes only those 27 academies open in 2005/06 and 2006/07.
(4) Column B includes all academies providing absence data in 2006/07. Rates for academies are not directly comparable with those for earlier years - see footnote 3.
(5) Pupil numbers are as at January 2007. Includes pupils aged 5 to 15 with sole and dual (main) registration. Excludes boarders.
(6) Number of pupil enrolments in schools from start of the school year up until 25 May 2007. Includes pupils on the school roll for at least one session who are aged between 5 and 15, excluding boarders. Some pupils may be counted more than once (if they moved schools during the school year or are registered at more than one school). See Notes to Editors 11 to 13.
(7) The number of sessions missed due to authorised/ unauthorised/ overall absence expressed as a percentage of the total number of possible sessions.
(8) Although figures for academies are shown separately allowing direct comparison with other school types, it should be noted that academies are among the most challenging schools in the country, located in the some of the most disadvantaged areas. Year on year comparisons should take account of the increasing numbers of academies and that new academies may start from a particularly challenging position. Column A provides directly comparable data with figures for 2005/06 (see footnote 3). Tables 6.1 and 6.2 provide further academy-specific analyses of absence data.
(9) Figures in italics have been sourced from the Absence in Schools Survey. Other figures are derived from School Census returns. Totals provided for 2005/06 combine figures from both sources. See Notes to Editor 9. Lines in timeseries indicate changes in the underlying data source.
.. Not available
. Not applicable
Totals may not appear to equal the sum of component parts because numbers have been rounded to the nearest 10.

Table 2.1

PRIMARY, SECONDARY AND SPECIAL SCHOOLS (1)(2)(3):**ABSENCE BY REASON**

2006/07

England

	Primary Schools	Secondary Schools (3)	Special Schools (2)	Total
<u>DISTRIBUTION OF REASONS FOR ABSENCE</u>				
Percentage of absent sessions due to (4):				
Illness (NOT medical or dental)	60.1	51.4	39.1	54.9
Medical/dental appointments	6.4	6.6	11.1	6.6
Religious observance	0.1	0.1	0.1	0.1
Study leave	0.1	3.5	0.8	2.1
Traveller absence	0.5	0.2	0.3	0.3
Agreed family holiday	14.8	5.9	6.3	9.6
Agreed extended family holiday	0.6	0.2	0.4	0.3
Excluded, no alternative provision	0.5	3.1	3.8	2.0
Other authorised circumstances	6.7	9.7	18.3	8.6
Total Authorised Absence	89.8	80.6	80.2	84.5
Percentage of absent sessions due to (4):				
Unauthorised absence, family holiday not agreed	1.4	1.0	0.4	1.1
Unauthorised absence, arrived late	1.1	1.1	0.5	1.1
Unauthorised absence, not covered	5.0	11.4	17.1	8.8
Unauthorised absence, no reason yet	2.6	5.9	1.9	4.4
Total Unauthorised Absence	10.2	19.4	19.8	15.5
Total Overall Absence	100.0	100.0	100.0	100.0
<u>ABSENCE RATES BY REASON</u>				
Percentage of possible sessions missed due to (4):				
Illness (NOT medical or dental)	3.04	3.93	3.83	3.47
Medical/dental appointments	0.32	0.51	1.08	0.42
Religious observance	0.01	0.01	0.01	0.01
Study leave	0.01	0.27	0.08	0.13
Traveller absence	0.02	0.01	0.03	0.02
Agreed family holiday	0.75	0.45	0.61	0.61
Agreed extended family holiday	0.03	0.01	0.04	0.02
Excluded, no alternative provision	0.02	0.24	0.37	0.13
Other authorised circumstances	0.34	0.74	1.79	0.54
Unclassified (5)	0.11	0.19	0.70	0.15
Total Authorised Absence	4.66	6.36	8.55	5.49
Percentage of possible sessions missed due to (4):				
Unauthorised absence, family holiday not agreed	0.07	0.07	0.04	0.07
Unauthorised absence, arrived late	0.06	0.09	0.05	0.07
Unauthorised absence, not covered	0.26	0.87	1.67	0.56
Unauthorised absence, no reason yet	0.13	0.45	0.18	0.28
Unclassified (5)	0.01	0.03	0.13	0.02
Total Unauthorised Absence	0.52	1.52	2.07	1.00
Total Overall Absence	5.18	7.87	10.62	6.49

Source: School Census

(1) Includes middle schools as deemed.

(2) Includes maintained and non-maintained special schools. Excludes general hospital schools.

(3) Includes maintained secondary schools, city technology colleges and academies (including all-through academies).

(4) Percentages are based on absence totals as reported by reason (not overall totals). See Notes to Editors 10 and 11.

(5) Includes absence returned as either authorised or unauthorised totals but not broken down by reason, see Notes to Editor 10.

Table 2.2
PRIMARY, SECONDARY AND SPECIAL SCHOOLS (1)(2)(3):
ABSENCE DUE TO ILLNESS BY FREE SCHOOL MEAL ELIGIBILITY
 2006/07
 England

		Absence reason - Illness	
		Percentage absence (4)	Absence rate
Girls	Known to be eligible for free school meals	51.3	4.77
	Other pupils	56.1	3.39
	Total	55.0	3.61
Boys	Known to be eligible for free school meals	47.3	4.41
	Other pupils	53.1	3.13
	Total	51.8	3.33
Total	Known to be eligible for free school meals	49.3	4.59
	Other pupils	54.6	3.26
	Total	53.4	3.47

Source: School Census

- (1) Includes middle schools as deemed.
- (2) Includes maintained and non-maintained special schools. Excludes general hospital schools.
- (3) Includes maintained secondary schools, city technology colleges and academies (including all-through academies).
- (4) Percentage of all absence for pupils of same gender and FSM eligibility status.

Table 2.3

**PRIMARY, SECONDARY AND SPECIAL SCHOOLS (1)(2)(3):
ABSENCE BY REASON FOR PERSISTENT ABSENTEES (4)
2006/07
England**

	Persistent Absentees (4)				Non Persistent Absentees			
	Primary Schools	Secondary Schools (3)	Special Schools (2)	Total	Primary Schools	Secondary Schools (3)	Special Schools (2)	Total
<u>DISTRIBUTION OF REASONS FOR ABSENCE</u>								
Percentage of absent sessions due to (5):								
Illness (NOT medical or dental)	46.6	35.0	29.2	37.0	61.7	58.6	48.2	60.0
Medical/dental appointments	4.4	3.7	5.8	3.9	6.6	7.9	15.9	7.4
Religious observance	0.1	0.0	0.1	0.0	0.1	0.1	0.1	0.1
Study leave	0.1	2.0	1.2	1.6	0.1	4.2	0.5	2.2
Traveller absence	3.8	0.4	0.5	1.1	0.1	0.0	0.1	0.1
Agreed family holiday	4.9	1.6	2.3	2.3	15.9	7.7	9.9	11.7
Agreed extended family holiday	1.6	0.1	0.4	0.4	0.5	0.2	0.4	0.3
Excluded, no alternative provision	2.0	5.6	5.1	4.9	0.3	2.0	2.7	1.2
Other authorised circumstances	10.1	12.8	23.8	12.7	6.4	8.3	13.3	7.4
Total Authorised Absence	73.6	61.3	68.3	63.9	91.7	89.1	91.1	90.4
Percentage of absent sessions due to (5):								
Unauthorised absence, family holiday not agreed	1.8	0.6	0.4	0.8	1.4	1.1	0.4	1.2
Unauthorised absence, arrived late	2.3	1.6	0.5	1.7	1.0	1.0	0.6	1.0
Unauthorised absence, not covered	16.4	27.0	28.4	25.0	3.8	4.6	6.7	4.2
Unauthorised absence, no reason yet	5.9	9.5	2.5	8.6	2.2	4.3	1.2	3.2
Total Unauthorised Absence	26.4	38.7	31.7	36.1	8.3	10.9	8.9	9.6
Total Overall Absence	100.0	100.0	100.0	100.0	100.0	100.0	100.0	100.0
<u>ABSENCE RATES BY REASON</u>								
Percentage of possible sessions missed due to (5):								
Illness (NOT medical or dental)	13.57	12.28	11.23	12.53	2.85	3.34	2.80	3.07
Medical/dental appointments	1.28	1.31	2.22	1.34	0.31	0.45	0.93	0.38
Religious observance	0.02	0.01	0.03	0.01	0.01	0.01	0.00	0.01
Study leave	0.03	0.72	0.45	0.56	0.01	0.24	0.03	0.11
Traveller absence	1.10	0.15	0.19	0.36	0.00	0.00	0.01	0.00
Agreed family holiday	1.42	0.56	0.88	0.76	0.74	0.44	0.58	0.60
Agreed extended family holiday	0.48	0.05	0.17	0.15	0.02	0.01	0.02	0.02
Excluded, no alternative provision	0.58	1.95	1.96	1.65	0.01	0.12	0.15	0.06
Other authorised circumstances	2.95	4.50	9.15	4.31	0.29	0.47	0.77	0.38
Unclassified (6)	0.78	0.88	2.97	0.93	0.09	0.14	0.39	0.12
Total Authorised Absence	22.22	22.41	29.27	22.59	4.34	5.21	5.69	4.75
Percentage of possible sessions missed due to (5):								
Unauthorised absence, family holiday not agreed	0.52	0.22	0.14	0.29	0.06	0.06	0.02	0.06
Unauthorised absence, arrived late	0.68	0.55	0.18	0.56	0.04	0.06	0.03	0.05
Unauthorised absence, not covered	4.78	9.47	10.93	8.47	0.17	0.26	0.39	0.21
Unauthorised absence, no reason yet	1.71	3.34	0.98	2.90	0.10	0.24	0.07	0.17
Unclassified (6)	0.13	0.28	0.73	0.26	0.01	0.02	0.05	0.01
Total Unauthorised Absence	7.82	13.86	12.95	12.48	0.39	0.64	0.57	0.50
Total Overall Absence	30.03	36.27	42.22	35.07	4.73	5.85	6.25	5.25

Source: School Census

(1) Includes middle schools as deemed.

(2) Includes maintained and non-maintained special schools. Excludes general hospital schools.

(3) Includes maintained secondary schools, city technology colleges and academies (including all-through academies)..

(4) Persistent Absentees are defined as having more than 63 sessions of absence (authorised and unauthorised) during the year (typically more than 20 per cent absence).

(5) Percentages are based on absence totals as reported by reason (not overall totals). See Notes to Editors 10 and 11.

(6) Includes absence returned as either authorised or unauthorised totals but not broken down by reason, see Notes to Editors 10.

Table 3.1

**PRIMARY, SECONDARY AND SPECIAL SCHOOLS (1)(2):
DISTRIBUTION OF ENROLMENTS BY LENGTH OF OVERALL ABSENCE**

2006/07

England

	Primary Schools			Secondary Schools (3)			Special Schools (2)			Total		
	Pupil enrolments in schools during 2006/07 (4)		Percentage of overall absence (5)	Pupil enrolments in schools during 2006/07 (4)		Percentage of overall absence (5)	Pupil enrolments in schools during 2006/07 (4)		Percentage of overall absence (5)	Pupil enrolments in schools during 2006/07 (4)		Percentage of overall absence (5)
	Number	Percentage		Number	Percentage		Number	Percentage		Number	Percentage	
Number of days overall absence (2):												
No Absence	276,150	8.0	0.0	170,820	5.6	0.0	7,450	9.7	0.0	454,420	6.9	0.0
0.5 to 5 days	1,441,020	41.6	14.7	999,360	32.9	7.7	21,880	28.3	5.2	2,462,250	37.4	10.6
5.5 to 10 days	868,840	25.1	24.8	714,610	23.5	15.2	15,840	20.5	10.5	1,599,280	24.3	19.2
10.5 to 15 days	438,520	12.7	20.8	437,540	14.4	15.4	10,080	13.0	11.1	886,130	13.5	17.6
15.5 to 20 days	212,060	6.1	14.1	255,500	8.4	12.6	6,120	7.9	9.4	473,670	7.2	13.2
20.5 to 25 days	103,380	3.0	8.8	150,150	4.9	9.5	3,840	5.0	7.6	257,370	3.9	9.2
more than 25 days	123,170	3.6	16.9	314,110	10.3	39.5	12,020	15.6	56.2	449,300	6.8	30.3
Total	3,463,120	100.0	100.0	3,042,080	100.0	100.0	77,230	100.0	100.0	6,582,430	100.0	100.0

(1) Includes middle schools as deemed.

(2) Includes maintained and non-maintained special schools. Excludes general hospital schools.

(3) Includes maintained secondary schools, city technology colleges and academies (including all-through academies)..

(4) Number of pupil enrolments in schools from start of the school year to 25 May 2007. Includes pupils on the school roll for at least one session who are aged between 5 and 15. Excludes boarders. Some pupils may be counted more than once (if they moved schools during the school year or are registered in more than one school). See Notes to Editors 11 to 13.

(5) Percentage of sessions missed due to overall absence by each band. The number of sessions missed due to overall absence in each band expressed as a percentage of the total number of sessions missed due to overall absence.

Source: School Census

Totals may not appear to equal the sum of the component parts because numbers have been rounded to the nearest 10.

Table 3.2

**PRIMARY, SECONDARY AND SPECIAL SCHOOLS (1)(2):
PERCENTAGE OF ENROLMENTS BY THEIR OVERALL ABSENCE RATES**
2006/07
England

	Primary Schools			Secondary Schools (3)			Special Schools (2)			Total		
	Pupil enrolments in schools during 2006/07 (4)		Percentage of overall absence (5)	Pupil enrolments in schools during 2006/07 (4)		Percentage of overall absence (5)	Pupil enrolments in schools during 2006/07 (4)		Percentage of overall absence (5)	Pupil enrolments in schools during 2006/07 (4)		Percentage of overall absence (5)
	Number	Percentage		Number	Percentage		Number	Percentage		Number	Percentage	
Overall absence rate (2):												
0.00%	276,150	8.0	0.0	170,820	5.6	0.0	7,450	9.7	0.0	454,420	6.9	0.0
0.01% to 4.00%	1,588,550	45.9	18.5	1,126,190	37.0	10.0	23,990	31.1	6.7	2,738,720	41.6	13.5
4.01% to 6.00%	521,640	15.1	14.7	426,230	14.0	9.0	9,400	12.2	6.1	957,270	14.5	11.4
6.01% to 10.00%	595,360	17.2	26.0	569,480	18.7	18.8	13,050	16.9	13.3	1,177,890	17.9	21.8
10.01% to 20.00%	384,710	11.1	28.2	501,940	16.5	28.9	12,910	16.7	23.2	899,560	13.7	28.5
20.01% to 30.00%	60,860	1.8	7.1	125,420	4.1	12.3	4,240	5.5	12.7	190,520	2.9	10.1
30.01% to 50.00%	23,700	0.7	3.6	75,060	2.5	10.9	3,280	4.2	14.8	102,040	1.6	7.9
50.01% and above	12,160	0.4	1.8	46,940	1.5	10.1	2,920	3.8	23.1	62,020	0.9	6.8
Total	3,463,120	100.0	100.0	3,042,080	100.0	100.0	77,230	100.0	100.0	6,582,430	100.0	100.0

(1) Includes middle schools as deemed.

(2) Includes maintained and non-maintained special schools. Excludes general hospital schools.

(3) Includes maintained secondary schools, city technology colleges and academies (including all-through academies).

(4) Number of pupil enrolments in schools from start of the school year to 25 May 2007. Includes pupils on the school roll for at least one session who are aged between 5 and 15. Excludes boarders. Some pupils may be counted more than once (if they moved schools during the school year or are registered in more than one school). See Notes to Editors 11 to 13.

(5) The number of sessions missed due to overall absence in each band expressed as a percentage of the total number of sessions missed due to overall absence.

Source: School Census

Totals may not appear to equal the sum of the component parts because numbers have been rounded to the nearest 10.

Table 4.1
PRIMARY, SECONDARY AND SPECIAL SCHOOLS (1)(2)(3):
PERSISTENT ABSENTEES (4)
 2006/07
 England

	2005/06	2006/07
Primary Schools (1)		
Number of pupil enrolments that are persistent absentees (4)(5)	..	60,960
Total number of pupil enrolments (5)	..	3,463,120
Percentage of pupil enrolments that are persistent absentees	..	1.8
Percentage of half days missed by persistent absentees due to (6):		
Authorised Absence	..	22.22
Unauthorised Absence	..	7.82
Overall absence	..	30.03
Percentage of absence for which persistent absentees are responsible (7):		
Authorised Absence	..	8.4
Unauthorised Absence	..	26.4
Overall absence	..	10.3
Secondary Schools (1)(2)		
Number of pupil enrolments that are persistent absentees (4)(5)	217,390	203,180
Total number of pupil enrolments (5)	3,056,330	3,042,080
Percentage of pupil enrolments that are persistent absentees	7.1	6.7
Percentage of half days missed by persistent absentees due to (6):		
Authorised Absence	23.21	22.41
Unauthorised Absence	12.26	13.86
Overall absence	35.48	36.27
Percentage of absence for which persistent absentees are responsible (7):		
Authorised Absence	24.0	23.5
Unauthorised Absence	60.9	60.9
Overall absence	30.4	30.7
Special Schools (3)		
Number of pupil enrolments that are persistent absentees (4)(5)	..	8,820
Total number of pupil enrolments (5)	..	77,230
Percentage of pupil enrolments that are persistent absentees	..	11.4
Percentage of half days missed by persistent absentees due to (6):		
Authorised Absence	..	29.27
Unauthorised Absence	..	12.95
Overall absence	..	42.22
Percentage of absence for which persistent absentees are responsible (7):		
Authorised Absence	..	41.6
Unauthorised Absence	..	76.0
Overall absence	..	48.3
Total		
Number of pupil enrolments that are persistent absentees (4)(5)	..	272,950
Total number of pupil enrolments (5)	..	6,582,430
Percentage of pupil enrolments that are persistent absentees	..	4.1
Percentage of half days missed by persistent absentees due to (6):		
Authorised Absence	..	22.59
Unauthorised Absence	..	12.48
Overall absence	..	35.07
Percentage of absence for which persistent absentees are responsible (7):		
Authorised Absence	..	17.1
Unauthorised Absence	..	51.8
Overall absence	..	22.5

Source: School Census

(1) Includes middle schools as deemed.

(2) Includes maintained secondary schools, city technology colleges and academies (including all-through academies).

(3) Includes maintained and non-maintained special schools. Excludes general hospital schools.

(4) Persistent Absentees are defined as having more than 63 sessions of absence (authorised and unauthorised) during the year, typically over 20 per cent overall absence rate.

(5) Number of pupil enrolments in schools from start of the school year to 25 May 2007. Includes pupils on the school roll for at least one session who are aged between 5 and 15. Excludes boarders. Some pupils may be counted more than once (if they moved schools during the school year or are registered in more than one school). See Notes to Editors 11 to 13.

(6) The number of sessions missed due to authorised/unauthorised/overall absence expressed as a percentage of the total number of possible sessions.

(7) The total number of sessions missed due to authorised/unauthorised/overall absence by persistent absentees expressed as a percentage of the total number of sessions missed due to authorised/unauthorised/overall absence by all pupil enrolments.

.. Not available

Totals may not appear to equal the sum of the component parts because numbers have been rounded to the nearest 10.

Table 4.2

**PRIMARY, SECONDARY AND SPECIAL SCHOOLS (1)(2):
CHARACTERISTICS OF PERSISTENT ABSENTEES (3)(4)**
2006/07
England

	Persistent Absentees (3)				
	Pupil enrolments in schools during 2006/07 (5)(6)		Percentage of half days missed (7):		
	Number	Percentage (8)	Authorised absence	Unauthorised absence	Overall absence
Gender					
Boys	138,250	4.1	22.84	12.52	35.37
Girls	134,710	4.2	22.33	12.44	34.77
Total (9)	272,950	4.1	22.59	12.48	35.07
Free School Meal (FSM) Eligibility					
Known to be eligible for FSM	95,760	9.3	21.04	14.04	35.08
Other pupils (9)	177,190	3.2	23.44	11.62	35.07
Total (9)	272,950	4.1	22.59	12.48	35.07
National Curriculum Year Group:					
1 and below	13,420	2.4	22.37	7.05	29.42
2	10,030	1.8	21.89	7.78	29.66
3	9,280	1.6	22.18	7.59	29.77
4	9,330	1.6	22.27	7.52	29.80
5	10,270	1.7	22.52	7.73	30.25
6	10,230	1.8	23.12	7.87	30.99
7	19,100	3.3	23.92	8.85	32.78
8	29,090	4.9	23.62	10.41	34.04
8	38,540	6.4	23.05	12.90	35.94
10	51,500	8.4	21.61	15.32	36.93
11	66,730	11.1	21.70	16.03	37.73
12 and above	90	9.7	20.67	14.37	35.05
Total (9)	272,950	4.1	22.59	12.48	35.07
First Language					
First language is known or believed to be other than English	22,850	3.0	21.33	10.38	31.71
First language is known or believed to be English	243,880	4.3	22.52	12.52	35.04
Total (9)	272,950	4.1	22.59	12.48	35.07
Special Educational Needs					
Statements of SEN	20,880	10.5	26.79	12.11	38.90
School Action Plus	44,810	11.4	23.13	15.20	38.32
School Action	56,710	6.9	21.05	13.32	34.37
No identified SEN	150,560	2.9	22.43	11.39	33.82
Total (9)	272,950	4.1	22.59	12.48	35.07

Source: School Census

(1) Includes middle schools as deemed.

(2) Includes maintained and non-maintained special schools. Excludes general hospital schools. Includes maintained secondary schools, city technology colleges and academies (including all-through academies).

(3) Persistent Absentees are defined as having more than 63 sessions of absence (authorised and unauthorised) during the year, typically over 20 per cent overall absence rate.

(4) See Notes to Editors 12 for further information on how absence and pupil characteristic data have been linked.

(5) Number of enrolments in schools from start of the school year to 25 May 2007. Includes pupils on the school roll for at least one session who are aged between 5 and 15. Excludes boarders. Some pupils may be counted more than once (if they moved schools during the school year or are registered in more than one school). See Notes to Editors 11, 12 and 13.

(6) Enrolments for whom absence data are missing have been excluded. See Notes to Editors 14.

(7) The number of sessions missed due to authorised/unauthorised/overall absence expressed as a percentage of the total number of possible sessions of Persistent Absentees.

(8) The number of Persistent Absentee enrolments expressed as a percentage of the total number of enrolments with same gender or year group or SEN etc.

(9) Includes pupil enrolments for whom characteristic data were unclassified or missing. Total rates may be higher than rates for each subgroup.

Totals may not appear to equal the sum of the component parts because numbers have been rounded to the nearest 10.

Table 4.3
PRIMARY, SECONDARY AND SPECIAL SCHOOLS (1)(2):
PERSISTENT ABSENTEES BY ETHNIC GROUP (3)(4)
 2006/07
 England

	Persistent Absentees (3)				
	Pupil enrolments in schools during 2005/06 (5)		Percentage of half days missed (6):		
	Number	Percentage (7)	Authorised absence	Unauthorised absence	Overall absence
White	227,310	4.3	22.59	12.45	35.04
White British	213,870	4.2	22.51	12.43	34.94
Irish	1,350	5.9	22.66	13.17	35.82
Traveller of Irish heritage	1,850	41.8	31.09	13.90	44.99
Gypsy/ Roma	2,750	31.2	25.54	14.38	39.92
Any other White background	7,480	4.1	21.96	11.64	33.60
Mixed	10,090	4.7	21.05	13.47	34.53
White and Black Caribbean	4,640	6.2	20.71	14.19	34.89
White and Black African	870	3.9	20.36	13.67	34.03
White and Asian	1,430	3.3	21.49	12.56	34.05
Any other Mixed background	3,160	4.3	21.56	12.78	34.34
Asian	14,180	2.9	21.68	9.03	30.71
Indian	2,640	1.8	22.65	7.66	30.31
Pakistani	7,150	3.6	21.98	8.65	30.64
Bangladeshi	3,080	3.8	19.89	10.66	30.55
Any other Asian background	1,320	2.1	22.25	10.01	32.26
Black	7,350	2.6	21.32	12.39	33.72
Black Caribbean	3,680	4.0	20.92	12.74	33.66
Black African	2,460	1.6	22.32	11.25	33.57
Any other Black background	1,210	3.9	20.55	13.62	34.18
Chinese	200	0.9	24.24	8.39	32.63
Any other ethnic group	2,380	3.3	21.28	11.63	32.90
Minority Ethnic Pupils (8)	47,640	3.7	22.11	11.62	33.73
All pupils (9)	272,950	4.1	22.59	12.48	35.07

Source: School Census

(1) Includes middle schools as deemed.

(2) Includes maintained and non-maintained special schools. Excludes general hospital schools. Includes maintained secondary schools, city technology colleges and academies (including all-through academies).

(3) Persistent Absentees are defined as having more than 63 sessions of absence (authorised and unauthorised) during the year, typically over 20 per cent overall absence rate.

(4) See Notes to Editors 12 for further information on how absence and pupil characteristic data have been linked.

(5) Number of enrolments in schools from start of the school year until 25 May 2007. Includes pupils on the school roll for at least one session who are aged between 5 and 15. Excludes boarders. Some pupils may be counted more than once (if they moved schools during the school year or are registered in more than one school). See Notes to Editors 11, 12 and 13.

(6) The number of sessions missed due to authorised/unauthorised/overall absence expressed as a percentage of the total number of possible sessions of Persistent Absentees.

(7) The number of Persistent Absentee enrolments expressed as a percentage of the total number of pupil enrolments of same ethnic origin.

(8) Pupils who have been classified according to their ethnic group, excluding White British.

(9) Includes enrolments for whom information on ethnic group was unclassified or missing.

Totals may not appear to equal the sum of the component parts because numbers have been rounded to the nearest 10.

Table 4.4

**PRIMARY, SECONDARY AND SPECIAL SCHOOLS (1)(2)(3):
NUMBER OF SCHOOLS BY THE PERCENTAGE OF PERSISTENT ABSENTEES (5)**

2006/07

England

	Primary Schools		Secondary Schools (2)		Special Schools (3)		Total	
	Number of schools	% of schools	Number of schools	% of schools	Number of schools	% of schools	Number of schools	% of schools
Percentage of school enrolments who are Persistent Absentees (6):								
Up to 3 per cent	14,165	81	621	18	140	14	14,926	68
3.0 per cent to 5.9 per cent	2,625	15	1,072	31	186	18	3,883	18
6.0 per cent to 8.9 per cent	481	3	959	28	186	18	1,626	7
9.0 per cent to 11.9 per cent	83	0	460	13	149	15	692	3
12.0 per cent to 14.9 per cent	16	0	181	5	86	8	283	1
15.0 per cent to 19.9 per cent	6	0	97	3	76	7	179	1
20.0 per cent and above	8	0	28	1	193	19	229	1
Total	17,384	100	3,418	100	1,016	100	21,818	100

Source: School Census

(1) Includes middle schools as deemed.

(2) Includes maintained secondary schools, city technology colleges and academies (including all-through academies).

(3) Includes maintained and non-maintained special schools. Excludes general hospital schools.

(4) Includes schools with at least one enrolment aged between 5 and 15.

(5) Persistent Absentees are defined as having more than 63 sessions of absence (authorised and unauthorised) during the year, typically over 20 per cent overall absence rate.

(6) The number of Persistent Absentees expressed as a percentage of the total number of enrolments.

Table 5.1

**PRIMARY, SECONDARY AND SPECIAL SCHOOLS (1)(2):
PUPIL ABSENCE BY GENDER AND FREE SCHOOL MEAL (FSM) ELIGIBILITY (3)**

2006/07

England

	Primary Schools			Secondary Schools (4)			Special Schools (2)			Total		
	Boys	Girls	Total	Boys	Girls	Total	Boys	Girls	Total	Boys	Girls	Total
Day pupils of compulsory school age (5):												
Number of pupils known to be eligible for FSM	284,970	275,300	560,260	214,300	210,710	425,010	17,740	6,970	24,710	517,010	492,970	1,009,980
Other pupils	1,404,450	1,342,190	2,746,640	1,284,070	1,243,280	2,527,350	33,900	14,200	48,100	2,722,420	2,599,670	5,322,090
Total	1,689,420	1,617,480	3,306,900	1,498,360	1,453,990	2,952,350	51,650	21,160	72,810	3,239,430	3,092,640	6,332,070
Percentage of half days missed - Authorised Absence (6):												
Pupils known to be eligible for FSM	5.99	5.94	5.96	8.46	8.55	8.50	9.23	9.20	9.22	7.12	7.10	7.11
Other pupils (5)	4.37	4.42	4.39	5.84	6.17	6.00	8.24	8.11	8.21	5.10	5.27	5.19
Total (5)	4.64	4.67	4.66	6.21	6.51	6.36	8.58	8.47	8.55	5.42	5.56	5.49
Percentage of half days missed - Unauthorised Absence (6):												
Pupils known to be eligible for FSM	1.32	1.25	1.28	3.33	3.46	3.39	3.34	2.00	2.96	2.22	2.20	2.21
Other pupils (5)	0.38	0.36	0.37	1.19	1.22	1.20	1.89	0.95	1.61	0.78	0.77	0.78
Total (5)	0.53	0.51	0.52	1.50	1.54	1.52	2.38	1.30	2.07	1.01	1.00	1.00
Percentage of half days missed - Overall Absence (6):												
Pupils known to be eligible for FSM	7.30	7.18	7.24	11.79	12.01	11.90	12.56	11.20	12.18	9.34	9.30	9.32
Other pupils (5)	4.75	4.78	4.76	7.03	7.39	7.20	10.13	9.06	9.82	5.88	6.05	5.96
Total (5)	5.17	5.19	5.18	7.70	8.05	7.87	10.96	9.77	10.62	6.43	6.56	6.49

Source: School Census

(1) Includes middle schools as deemed.

(2) Includes maintained and non-maintained special schools. Excludes general hospital schools.

(3) See Notes to Editors 12 for further information on how absence and pupil characteristic data have been linked.

(4) Includes maintained secondary schools, city technology colleges and academies (including all-through academies).

(5) Pupil numbers are as at January 2007. Includes pupils aged 5 to 15 with sole and dual (main) registration. Excludes boarders.

(6) The number of sessions missed due to authorised/ unauthorised/ overall absence expressed as a percentage of the total number of possible sessions.

(7) Includes pupils for whom free school meal eligibility status is missing or unclassified.

Totals may not appear to equal the sum of the component parts because numbers have been rounded to the nearest 10.

Table 5.2
PRIMARY, SECONDARY AND SPECIAL SCHOOLS (1)(2):
PUPIL ABSENCE BY ETHNIC GROUP (3)
2006/07
England

	Primary Schools				Secondary Schools (4)				Special Schools (2)				Total			
	Number of day pupils of compulsory school age (5)	Percentage of half days missed (6):			Number of day pupils of compulsory school age (5)	Percentage of half days missed (6):			Number of day pupils of compulsory school age (5)	Percentage of half days missed (6):			Number of day pupils of compulsory school age (5)	Percentage of half days missed (6):		
		Authorised absence	Unauthorised absence	Overall absence		Authorised absence	Unauthorised absence	Overall absence		Authorised absence	Unauthorised absence	Overall absence		Authorised absence	Unauthorised absence	Overall absence
White	2,668,370	4.64	0.45	5.09	2,464,590	6.50	1.49	7.98	59,260	8.29	2.09	10.37	5,192,220	5.56	0.96	6.52
White British	2,547,230	4.58	0.42	5.00	2,377,970	6.48	1.47	7.95	57,170	8.20	2.06	10.26	4,982,360	5.53	0.94	6.46
Irish	11,770	5.21	0.74	5.95	10,500	7.10	1.90	9.00	250	10.06	2.76	12.82	22,520	6.14	1.30	7.45
Traveller of Irish heritage	2,900	18.22	6.45	24.68	1,060	18.93	10.21	29.14	90	20.62	9.87	30.48	4,050	18.47	7.52	25.99
Gypsy/ Roma	5,420	13.64	4.67	18.31	2,660	14.35	9.34	23.69	150	14.84	9.03	23.87	8,230	13.89	6.24	20.13
Any other White background	101,060	5.28	0.83	6.11	72,410	6.37	1.65	8.03	1,590	9.61	1.85	11.45	175,060	5.77	1.18	6.95
Mixed	122,570	4.89	0.76	5.65	84,000	6.49	1.94	8.43	2,410	9.26	2.74	12.00	208,980	5.58	1.26	6.83
White and Black Caribbean	40,810	5.05	0.93	5.98	31,130	7.09	2.44	9.53	930	10.33	4.01	14.33	72,870	5.98	1.61	7.60
White and Black African	13,350	4.56	0.70	5.27	8,120	5.99	1.88	7.87	230	7.55	2.71	10.26	21,700	5.13	1.17	6.29
White and Asian	25,520	4.71	0.57	5.28	16,440	5.95	1.35	7.30	440	7.40	1.20	8.60	42,400	5.22	0.88	6.09
Any other Mixed background	42,890	4.94	0.73	5.67	28,320	6.29	1.74	8.03	810	9.53	2.12	11.64	72,020	5.52	1.14	6.66
Asian	276,630	4.94	0.72	5.66	198,070	5.08	1.20	6.28	4,850	10.78	1.26	12.04	479,550	5.06	0.92	5.98
Indian	78,730	4.61	0.47	5.08	64,760	4.52	0.73	5.25	1,070	9.17	0.68	9.85	144,560	4.60	0.59	5.19
Pakistani	114,820	5.14	0.81	5.95	76,740	5.69	1.46	7.15	2,540	11.17	1.41	12.58	194,100	5.43	1.08	6.51
Bangladeshi	48,190	5.40	1.06	6.45	30,710	5.22	1.72	6.93	630	11.86	2.04	13.91	79,530	5.38	1.32	6.69
Any other Asian background	34,890	4.41	0.55	4.96	25,850	4.55	0.99	5.54	610	10.86	0.86	11.72	61,360	4.53	0.74	5.27
Black	152,180	3.62	0.75	4.37	113,590	4.50	1.41	5.91	3,290	7.75	1.86	9.62	269,060	4.04	1.04	5.08
Black Caribbean	47,280	4.25	0.94	5.19	40,520	5.49	1.79	7.27	1,100	7.81	2.63	10.45	88,900	4.85	1.34	6.20
Black African	88,330	3.16	0.61	3.78	59,990	3.66	1.07	4.73	1,710	7.65	1.18	8.84	150,020	3.41	0.80	4.21
Any other Black background	16,570	4.22	0.92	5.14	13,080	5.31	1.81	7.12	490	7.94	2.47	10.41	30,140	4.75	1.33	6.08
Chinese	11,060	3.44	0.26	3.70	10,210	3.11	0.45	3.56	190	6.16	0.36	6.52	21,460	3.30	0.35	3.66
Any other ethnic group	40,160	4.82	0.91	5.72	28,190	5.30	1.60	6.91	590	9.87	1.42	11.29	68,940	5.06	1.20	6.25
Minority Ethnic Pupils (7)	723,750	4.79	0.80	5.59	520,680	5.45	1.51	6.96	13,420	9.62	1.91	11.53	1,257,850	5.11	1.11	6.22
All pupils (8)	3,306,900	4.66	0.52	5.18	2,952,350	6.36	1.52	7.87	72,810	8.55	2.07	10.62	6,332,070	5.49	1.00	6.49

(1) Includes middle schools as deemed.

(2) Includes maintained and non-maintained special schools. Excludes general hospital schools.

(3) See Notes to Editors 12 for further information on how absence and pupil characteristic data have been linked.

(4) Includes maintained secondary schools, city technology colleges and academies (including all-through academies).

(5) Pupil numbers are as at January 2007. Includes pupils aged 5 to 15 with sole and dual (main) registration. Excludes boarders.

(6) The number of sessions missed due to authorised/ unauthorised/ overall absence expressed as a percentage of the total number of possible sessions.

(7) Pupils who have been classified according to their ethnic group, excluding White British.

(8) Includes pupil enrolments for whom information on ethnic group was unclassified or missing.

. Not applicable

Source: School Census

Totals may not appear to equal the sum of the component parts because numbers have been rounded to the nearest 10.

Table 5.3

**PRIMARY, SECONDARY AND SPECIAL SCHOOLS (1)(2):
PUPIL ABSENCE BY NATIONAL CURRICULUM YEAR GROUP (3)**

2006/07
England

	Primary Schools				Secondary Schools (4)				Special Schools (2)				Total				
	Number of day pupils of compulsory school age (5)	Percentage of half days missed (6):			Number of day pupils of compulsory school age (5)	Percentage of half days missed (6):			Number of day pupils of compulsory school age (5)	Percentage of half days missed (6):			Number of day pupils of compulsory school age (5)	Percentage of half days missed (6):			
Authorised absence		Unauthorised absence	Overall absence	Authorised absence		Unauthorised absence	Overall absence	Authorised absence		Unauthorised absence	Overall absence	Authorised absence		Unauthorised absence	Overall absence		
National Curriculum Year Group:																	
1 and below	535,040	5.29	0.57	5.85	270	6.13	0.71	6.84	2,940	9.88	0.50	10.38	538,260	5.31	0.57	5.88	
2	544,920	4.66	0.52	5.18	280	5.58	0.79	6.37	3,250	8.88	0.63	9.52	548,450	4.68	0.52	5.20	
3	558,540	4.47	0.49	4.96	350	4.55	0.79	5.34	3,970	7.96	0.60	8.56	562,860	4.50	0.49	4.99	
4	564,260	4.48	0.48	4.96	340	5.00	0.70	5.70	4,560	7.41	0.55	7.96	569,160	4.50	0.48	4.99	
5	555,160	4.51	0.50	5.01	23,660	4.65	0.30	4.95	5,220	7.16	0.78	7.94	584,030	4.54	0.49	5.03	
6	540,810	4.39	0.49	4.88	26,990	4.92	0.34	5.26	5,710	7.41	0.93	8.35	573,510	4.45	0.49	4.93	
7	8,120	5.46	0.57	6.03	557,150	5.25	0.62	5.87	7,930	7.22	1.30	8.52	573,200	5.28	0.62	5.91	
8	20	3.47	1.37	4.84	578,160	6.00	0.94	6.95	8,640	8.02	1.86	9.88	586,810	6.03	0.96	6.99	
9	10	3.90	0.89	4.80	578,560	6.29	1.37	7.66	9,080	8.84	2.75	11.59	587,660	6.33	1.39	7.72	
10	20	2.69	0.59	3.29	598,000	6.49	1.98	8.47	9,630	9.14	3.46	12.60	607,650	6.54	2.00	8.53	
11	10	2.95	0.51	3.46	587,790	7.61	2.59	10.19	9,510	10.13	4.62	14.75	597,310	7.65	2.62	10.26	
12 and above	0	.	.	.	810	6.08	4.11	10.19	50	9.42	3.54	12.96	850	6.26	4.08	10.34	
Total (7)	3,306,900	4.66	0.52	5.18	2,952,350	6.36	1.52	7.87	72,810	8.55	2.07	10.62	6,332,070	5.49	1.00	6.49	

Source: School Census

(1) Includes middle schools as deemed.

(2) Includes maintained and non-maintained special schools. Excludes general hospital schools.

(3) See Notes to Editors 12 for further information on how absence and pupil characteristic data have been linked.

(4) Includes maintained secondary schools, city technology colleges and academies (including all-through academies).

(5) Pupil numbers are as at January 2007. Includes pupils aged 5 to 15 with sole and dual (main) registration. Excludes boarders.

(6) The number of sessions missed due to authorised/ unauthorised/ overall absence expressed as a percentage of the total number of possible sessions.

(7) Includes pupil enrolments for whom information on national curriculum year group was unclassified or missing.

. Not applicable

Totals may not appear to equal the sum of the component parts because numbers have been rounded to the nearest 10.

Table 5.4
PRIMARY, SECONDARY AND SPECIAL SCHOOLS (1)(2)
PUPIL ABSENCE BY FIRST LANGUAGE (3)
 2006/07
 England

	Primary Schools			Secondary Schools (4)				Special Schools (2)				Total				
	Number of day pupils of compulsory school age (5)	Percentage of half days missed (6):			Number of day pupils of compulsory school age (5)	Percentage of half days missed (6):			Number of day pupils of compulsory school age (5)	Percentage of half days missed (6):			Number of day pupils of compulsory school age (5)	Percentage of half days missed (6):		
		Authorised absence	Unauthorised absence	Overall absence		Authorised absence	Unauthorised absence	Overall absence		Authorised absence	Unauthorised absence	Overall absence		Authorised absence	Unauthorised absence	Overall absence
Pupils whose first language is known or believed to be other than English	447,760	4.75	0.80	5.55	303,880	5.04	1.38	6.42	7,170	10.28	1.38	11.66	758,810	4.91	1.03	5.94
Pupils whose first language is known or believed to be English	2,858,080	4.61	0.46	5.07	2,646,910	6.46	1.50	7.96	64,640	8.30	2.12	10.41	5,569,620	5.53	0.97	6.50
Total (7)	3,306,900	4.66	0.52	5.18	2,952,350	6.36	1.52	7.87	72,810	8.55	2.07	10.62	6,332,070	5.49	1.00	6.49

(1) Includes middle schools as deemed.

(2) Includes maintained and non-maintained special schools. Excludes general hospital schools.

(3) See Notes to Editors 12 for further information on how absence and pupil characteristic data have been linked.

(4) Includes maintained secondary schools, city technology colleges and academies (including all-through academies).

(5) Pupil numbers are as at January 2007. Includes pupils aged 5 to 15 with sole and dual (main) registration. Excludes boarders.

(6) The number of sessions missed due to authorised/ unauthorised/ overall absence expressed as a percentage of the total number of possible sessions.

(7) Includes pupil enrolments for whom information on first language was unclassified or missing.

Source: School Census

Totals may not appear to equal the sum of the component parts because numbers have been rounded to the nearest 10.

Table 5.5
PRIMARY, SECONDARY AND SPECIAL SCHOOLS (1)(2):
PUPIL ABSENCE BY SPECIAL EDUCATIONAL NEEDS (SEN) (3)
 2006/07
 England

	Primary Schools				Secondary Schools (4)				Special Schools (2)				Total			
	Number of day pupils of compulsory school age (5)	Percentage of half days missed (6):			Number of day pupils of compulsory school age (5)	Percentage of half days missed (6):			Number of day pupils of compulsory school age (5)	Percentage of half days missed (6):			Number of day pupils of compulsory school age (5)	Percentage of half days missed (6):		
		Authorised absence	Unauthorised absence	Overall absence		Authorised absence	Unauthorised absence	Overall absence		Authorised absence	Unauthorised absence	Overall absence		Authorised absence	Unauthorised absence	Overall absence
Pupils with statements of SEN	57,370	6.54	0.72	7.27	67,660	8.43	2.57	11.00	70,960	8.45	2.01	10.46	195,990	7.88	1.82	9.70
Pupils with SEN without statements	672,310	5.63	0.92	6.55	527,520	8.30	3.11	11.41	830	11.32	4.48	15.80	1,200,660	6.80	1.88	8.69
Of which:-																
Pupils at <i>School Action Plus</i>	219,520	6.04	1.02	7.06	166,890	9.66	4.36	14.03	750	11.20	4.45	15.64	387,160	7.61	2.46	10.07
Pupils at <i>School Action</i>	452,800	5.43	0.88	6.31	360,630	7.67	2.54	10.21	80	12.56	4.76	17.32	813,500	6.42	1.61	8.03
Pupils with SEN (with and without statements)	729,680	5.70	0.91	6.61	595,180	8.31	3.05	11.36	71,790	8.49	2.04	10.53	1,396,650	6.95	1.88	8.83
Pupils with no identified SEN	2,577,220	4.36	0.42	4.78	2,357,180	5.87	1.13	7.00	1,020	16.78	5.61	22.40	4,935,420	5.08	0.76	5.84
Total (7)	3,306,900	4.66	0.52	5.18	2,952,350	6.36	1.52	7.87	72,810	8.55	2.07	10.62	6,332,070	5.49	1.00	6.49

(1) Includes middle schools as deemed.

(2) Includes maintained and non-maintained special schools. Excludes general hospital schools.

(3) See Notes to Editors 12 for further information on how absence and pupil characteristic data have been linked.

(4) Includes maintained secondary schools, city technology colleges and academies (including all-through academies).

(5) Pupil numbers are as at January 2007. Includes pupils aged 5 to 15 with sole and dual (main) registration. Excludes boarders.

(6) The number of sessions missed due to authorised/ unauthorised/ overall absence expressed as a percentage of the total number of possible sessions.

(7) Includes pupil enrolments for whom information on SEN was unclassified or missing.

Source: School Census

Totals may not appear to equal the sum of the component parts because numbers have been rounded to the nearest 10.

Table 6.1
ANALYSIS OF ACADEMIES WITH RESULTS IN BOTH 2005/06 AND 2006/07 (1)
PUPIL ABSENCE
2005/06 and 2006/07

	Academies open in 2005/06 and 2006/07		
	2005/06	2006/07	Difference
Total number of possible sessions	6,233,390	7,091,450	13.8% (2)
Total sessions missed			(2)
of which:			
due to authorised absence	413,370	437,120	5.7% (2)
due to unauthorised absence	150,720	151,170	0.3% (2)
Percentage of sessions missed (3)	9.05	8.30	-0.75 ppt (4)
of which:			
due to authorised absence	6.63	6.16	-0.47 ppt (4)
due to unauthorised absence	2.42	2.13	-0.29 ppt (4)
Total number of enrolments (5)	22,040	24,230	9.9% (2)
Number of pupil enrolments who are Persistent Absentees (6)	1,990	1,990	-0.2% (2)
Percentage of pupil enrolments who are Persistent Absentees (6)	9.0	8.2	-0.80 ppt (4)

Source: School Census

(1) Includes only those 27 academies which were open in September 2005.

(2) Percentage change compared with the same reporting period for the previous year.

(3) The number of sessions missed expressed as a percentage of the total number of possible sessions.

(4) Change in percentage points compared with the same reporting period for the previous year.

(5) Number of pupil enrolments in schools from start of the school year to 25 May 2007. Includes pupils on the school roll for at least one session who are aged between 5 and 15. Excludes boarders. Some pupils may be counted more than once (if they moved schools during the school year or are registered in more than one school). See Notes to Editors 11 to 13.

(6) Persistent Absentees are defined as having more than 63 sessions of absence (authorised and unauthorised) during the year, typically over 20 per cent overall absence rate.

Totals may not appear to equal the sum of the component parts because numbers have been rounded to the nearest 10.

Table 6.2
ALL ACADEMIES (1)
PUPIL ABSENCE
 2005/06 and 2006/07

	2005/06						2006/07					
	Percentage of half days missed (2):			Persistent absentees (3)			Percentage of half days missed (2):			Persistent absentees (3)		
	Number of schools	Authorised absence	Unauthorised absence	Overall absence	Number of pupil enrolments who are Persistent Absentees (4)	Percentage of pupil enrolments who are Persistent absentees (4)	Number of schools	Authorised absence	Unauthorised absence	Overall absence	Number of pupil enrolments who are Persistent Absentees (4)	Percentage of pupil enrolments who are Persistent absentees (4)
Academies by cohort												
2002 openers (5)	3	8.47	3.81	12.28	430	15.8	3	7.62	2.67	10.28	350	11.1
2003 openers (5)	9	6.94	2.13	9.07	660	8.3	9	5.93	2.50	8.43	700	7.9
2004 openers (5)	5	5.96	2.20	8.16	260	7.1	5	6.27	2.20	8.47	390	9.3
2005 openers (5)	10	6.00	2.30	8.30	640	8.3	10	5.83	1.51	7.34	550	6.9
2006 openers (5)	20	6.94	4.49	11.43	1,950	13.5
All academies (including new openers)	27	6.63	2.42	9.05	1,990	9.0	61	6.51	2.98	9.49	3,960	8.0

Source: School Census

(1) Includes all academies open at September 2006, academies are shown by date of opening. .

(2) The number of sessions missed due to authorised/unauthorised/overall absence expressed as a percentage of the total number of possible sessions.

(3) Persistent Absentees are defined as having more than 63 sessions of absence (authorised and unauthorised) during the year, typically over 20 per cent overall absence rate.

(4) Number of pupil enrolments in schools between 1 September 2006 and 27 May 2007. Includes pupils on the school roll for at least one session who are aged between 5 and 15, excluding boarders. Some pupils may be counted more than once (if they moved schools during the school year or are registered in more than one school). See Notes to Editors 11 and 12.

(5) These figures refer to the new academies - those schools set up to replace one or more existing schools or to meet a need for additional school places.

Totals may not appear to equal the sum of the component parts because numbers have been rounded to the nearest 10.