

# First Release

**SFR 44/2004****25 November 2004****Coverage: England****Theme: Education and  
Training****Issued by**Department for Education  
and SkillsSanctuary Buildings  
Great Smith Street  
London SW1P 3BT**Telephone:****Press Office**

020 7925 6789

**Public Enquiries**

0870 000 2288

**Statistician**

James Foley

01325 392648

**Email**

info@dfes.gsi.gov.uk

**Internet**[http://www.dfes.gov.uk/  
rsgateway/DB/SFR/](http://www.dfes.gov.uk/rsgateway/DB/SFR/)

INVESTOR IN PEOPLE

**SPECIAL EDUCATIONAL NEEDS IN ENGLAND, JANUARY  
2004****INTRODUCTION**

This Statistical First Release (SFR) brings together the information available on Special Educational Needs (SEN) and related information about special schools in England. It replaces the Statistical Bulletin "Special Educational Needs in England" (last published in November 2003) and updates provisional 2004 figures published in the SFR "Pupil Characteristics and Class Sizes in Maintained Schools in England".

Information is mainly drawn from two sources: the Annual Schools Census and the SEN2 survey. Figures from these two sources should not be aggregated or compared. (See Notes to Editor 2 and 4)

**KEY POINTS****Incidence and Placement of Pupils with SEN**

The trend information presented here needs to be viewed with some caution because of the changes in data collection in 2002. (See Notes to Editor 3)

**SEN Pupils in Schools (Tables 1a and 1b)**

- In January 2004 almost 247,600 pupils across all schools in England had statements of SEN. This represents the lowest number of pupils with statements of SEN over the last 5 years.
- The percentage of pupils with statements of SEN placed in maintained mainstream schools (nursery, primary, secondary) was 60.0 per cent, a slight decrease from 60.3 per cent a year earlier. The proportion of pupils placed in independent schools has increased from 2.8 per cent in 2003 to 3.1 per cent in 2004.
- There has been an increase in the number of pupils with statements placed in Pupil Referral Units, from 0.7 per cent in 2000 to 0.9 per cent in 2004. Over the same five year period there has been a slight decrease in the number of pupils with statements placed in special schools (both maintained and non-maintained) from 91,500 to 88,900.

- In 2004 there were some 1,197,500 pupils with SEN but without statements representing 14.4 per cent of pupils across all schools. This is a slight increase from 14.0 per cent a year earlier. Contrary to the pattern for statemented pupils, the incidence of non-statemented pupils with SEN is greater in primary schools (16.1 per cent) than in secondary schools (13.5 per cent). Due to changes in the classification system for SEN, the number of SEN pupils without statements reported in 2003 and later are not directly comparable with earlier years. (See Notes to Editor 6)

### **Newly Made Statements of SEN (Table 3a)**

- Of the 30,400 children assessed for SEN during the 2003 calendar year, 28,800 (95 per cent) were issued with a statement for the first time. Of these, some 7 per cent were placed in resourced provision or units attached to maintained mainstream schools, 67 per cent were placed in maintained mainstream schools, 19 per cent in special schools (maintained, non-maintained and independent), almost 3 per cent in registered early years education settings and less than 2 per cent in other schools.
- Since 1998 the number of children with new statements of SEN has steadily decreased from 36,200 in 1998 to 28,800 in 2003. The percentage of children with new statements placed in special schools (maintained and non-maintained) fell from 20 per cent in 1998 to 18 per cent in 2003. In 2003, around 77 per cent of children with new statements of SEN were placed in maintained mainstream schools, units attached to maintained mainstream schools or early years education settings. Due to changes in placement categories, there may be some discontinuity in the time-series data. (See Notes to Editor 6)

### **All Children With Statements of SEN (Tables 3b, 4a and 4b)**

- Figures for the total number of children with statements of SEN (not just those in schools) show that the number of statements maintained by an authority has decreased by just over 2,600 from last year to 261,100 in 2004. Similar to last year, 60 per cent of children were placed in maintained mainstream schools or units attached to maintained mainstream schools.
- Over 70 per cent of primary schools and 43 per cent of secondary schools had less than 2 per cent of pupils with statements of SEN. Less than 1 per cent of both primary and secondary schools had over 10 per cent of pupils with statements. However, there is some variation at regional level.

## CHARACTERISTICS OF PUPILS WITH SEN

### Gender (Table 5)

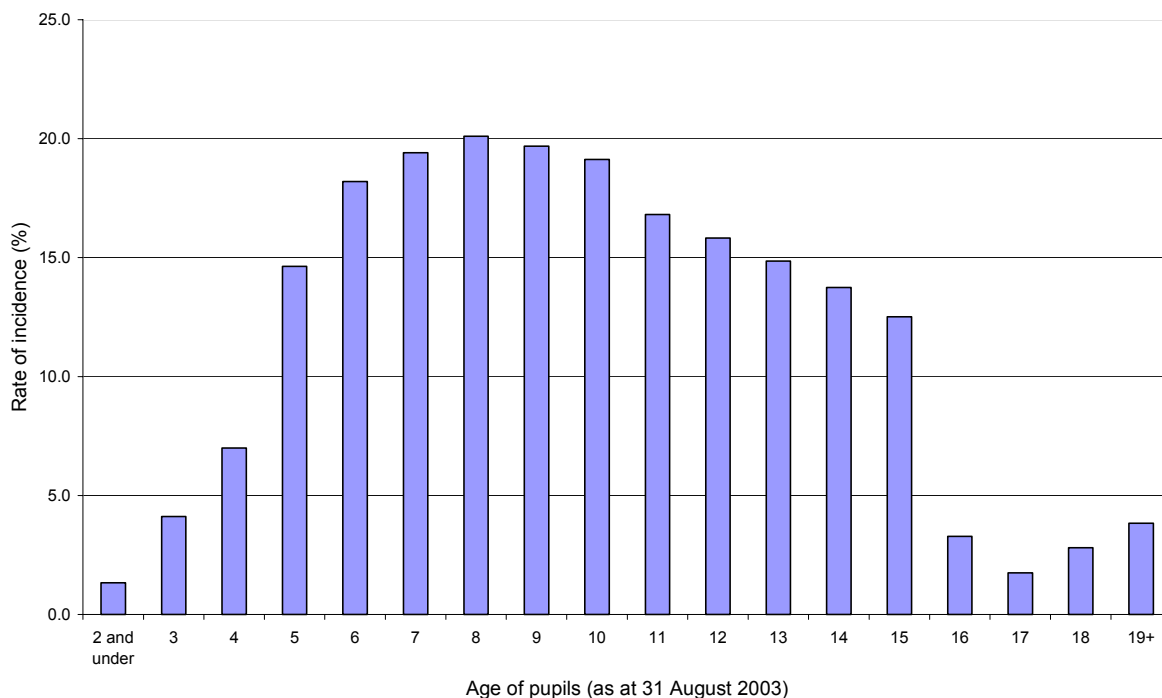
- In primary and secondary schools the incidence of SEN pupils without statements is nearly twice that for boys (around 1 in every 5 boys) than it is for girls (about 1 in every 9 girls). Similarly the incidence of pupils with statements of SEN is much higher for boys than it is for girls. In January 2004, over 106,600 boys in primary and secondary schools had a statement of SEN (around 28 in every 1,000 boys) compared with 41,400 girls (around 11 in every 1,000 girls) the former rate being over twice the latter.

### Age (Table 5)

- The rate of incidence of SEN pupils without statements in primary and secondary schools peaks at age 8, as illustrated in **Chart A**.

#### Chart A:

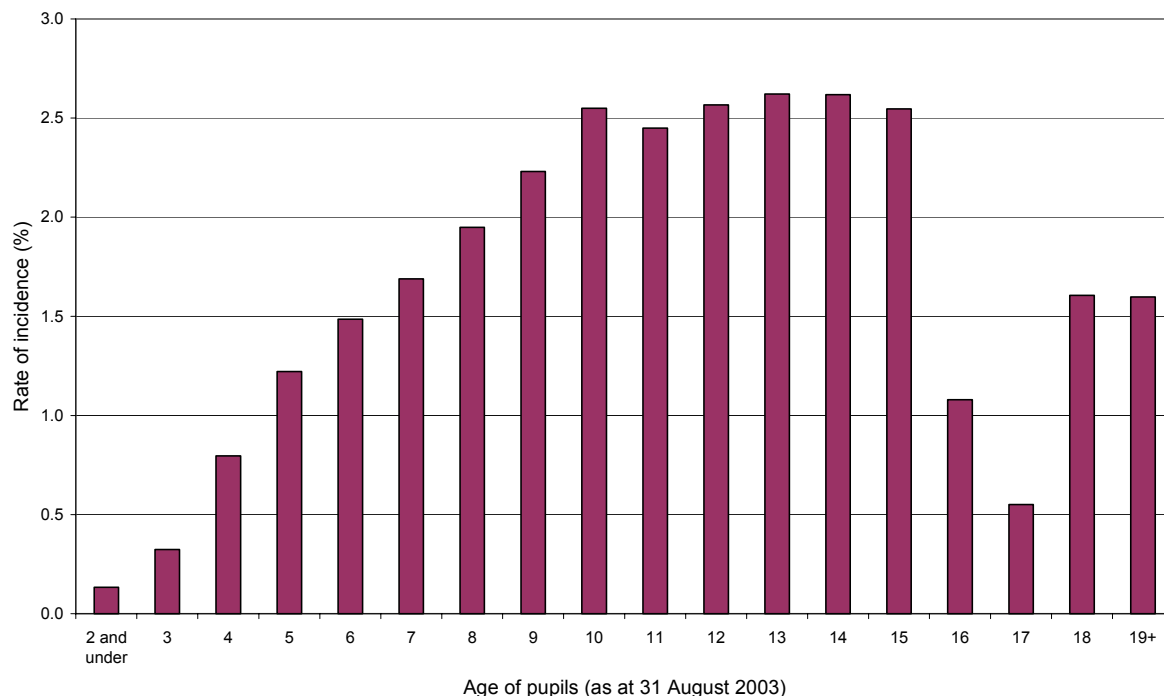
Rate of incidence of SEN pupils without statements in maintained primary and secondary schools: January 2004



- The rate of incidence of pupils with statements of SEN in primary and secondary schools peaks when pupils are aged 10, and then levels off during secondary age range at around 26 in every 1,000 pupils, before decreasing at age 16. This trend is illustrated in **Chart B**.

### Chart B:

Rate of incidence of pupils with statements of SEN in maintained primary and secondary schools: January 2004



### School Meal Arrangements (Table 7)

- The proportion of pupils known to be eligible for free school meals is much higher for pupils with SEN than for those pupils with no SEN. In January 2004, 30.6 per cent of SEN pupils (with and without statements) were known to be eligible for free school meals in primary schools compared with 14.5 per cent of pupils with no SEN. In secondary schools the comparable figures were 27.3 per cent for SEN pupils and 11.9 per cent for pupils with no SEN.

### Ethnicity (Tables 8a and 8b)

- In January 2004 around 19 in every 1,000 pupils of White ethnic origin had statements of SEN in maintained primary schools. In secondary schools 24 in every 1,000 pupils of White ethnic origin had statements. These figures were similar to those for Black and Mixed pupils.
- The proportion of pupils with statements of SEN was highest for the Gypsy/Roma (33 in every 1,000 pupils in primary schools and 84 in every 1,000 in secondary schools) and Travellers of Irish Heritage (28 in every 1,000 pupils in primary schools and 66 in every 1,000 pupils in secondary schools) groups. However, caution is recommended in interpreting data for Gypsy/Roma and Traveller of Irish Heritage children due to the small numbers recorded.

- Similarly, the proportion of SEN pupils without statements was greatest amongst Traveller of Irish Heritage (51 per cent in primary schools and 42 per cent in secondary schools) and Gypsy/Roma (47 per cent in primary schools and 39 per cent in secondary schools) groups. However, caution is recommended in interpreting data for Gypsy/Roma and Traveller of Irish Heritage children due to the small numbers recorded.
- In both primary and secondary schools, the lowest occurrence of SEN (with and without statements) was found in pupils of Chinese or Indian ethnic origin.

### **Type of Need (Table 9)**

- In primary schools the most prevalent type of special educational need amongst pupils was Moderate Learning Difficulty (reported by almost 30 per cent of pupils). In secondary school, most pupils (38 per cent) at *School Action Plus* had a main need of Behavioural, Emotional and Social Difficulties, and the most prevalent need amongst statemented pupils was Moderate Learning Difficulty. In special schools just over 30 per cent of pupils had a main need of Moderate Learning Difficulty. (See Notes to Editor 7)

## **TABLES**

- Table 1a** Number of pupils with statements of special educational needs by type of school, England 2000 to 2004
- Table 1b** Number of pupils with special educational needs without statements by type of school, England 2000 to 2004
- Table 2** Education arrangements, assessment and placement of children for whom local education authorities maintain a statement of SEN, England
- Table 3a** Assessment and placement of children with new statements of SEN, England 1997 to 2003
- Table 3b** Placement of children with a statement maintained by the authorities, England 2002 to 2004
- Table 4a** Maintained Primary Schools: Number of schools by percentage of pupils with SEN, England 2004
- Table 4b** Maintained Secondary Schools: Number of schools by percentage of pupils with SEN, England 2004
- Table 5** Maintained Primary, Secondary and Special Schools: Number of pupils with special educational needs by age and gender, England 2004
- Table 6a** Maintained Primary Schools: Number of pupils with special educational needs by national curriculum yeargroup, England 2004
- Table 6b** Maintained Secondary Schools: Number of pupils with special educational needs by national curriculum yeargroup, England 2004
- Table 7** Maintained Primary and Secondary Schools: Number and percentage of pupils known to be eligible for free school meals by stage of SEN, England 2004
- Table 8a** Maintained Primary Schools: Number of pupils with special educational needs by ethnic group, England 2004
- Table 8b** Maintained Secondary Schools: Number of pupils with special educational needs by ethnic group, England 2004
- Table 9** Maintained Primary, Secondary and Special Schools: Number and percentage of pupils by type of need, England 2004

## **FURTHER INFORMATION**

Additional tables giving Government Office Region and Local Education Authority breakdowns are available on the Department's statistical website:

<http://www.dfes.gov.uk/rsgateway/DB/SBU/b000537/index.shtml>

## NOTES TO EDITORS

1. Information presented in this SFR is mainly drawn from two sources: the Annual Schools Census (ASC) and the SEN2 Survey. Figures sourced from ASC and the SEN2 Survey are not directly comparable.
2. The ASC has collected information on pupils with special educational needs (SEN) on the census date in January from schools since 1985. It is completed by schools and records those pupils with and without statements who are educated at the school, regardless of which LEA is responsible. Figures for SEN pupils without statements were collected from maintained primary and secondary schools for the first time in 1995.
3. In January 2002 the ASC introduced a major change in that primary, secondary and special schools reported data at an individual pupil level for the first time. Whilst the overall collection of the Pupil Level Annual Schools Census for these schools was successful, it is possible that some discontinuity in the time series data has resulted from this underlying change in data collection. It is noticeable for instance that the national trend in SEN pupils with statements between 2001 and 2002 in ASC is different from that shown in the SEN2 survey. Whilst there are valid reasons as to why the figures will be different between these surveys, it is unusual for the trends to differ to this degree.
4. The SEN2 Survey has collected information on children with statements on the census date in January and new statements made in the previous calendar year from LEAs since 1984. SEN2 is completed by LEAs and records those children for whom the LEA is responsible (regardless of whether they are educated in the LEA's own maintained schools, in other LEA's schools, in the non-maintained or independent sectors or educated other than at school).
5. Arrangements for identifying and providing for children with SEN are set out in Part IV of the 1996 Act (and, prior to this, the 1981 and 1993 Education Acts). New rights and duties have been introduced by the SEN and Disability Act 2001 (SENDA). A Code of Practice, issued in 1994, supported the rights and duties in the 1996 Act. A new SEN Code of Practice was introduced in January 2002. All LEAs, schools and early years settings must have regard to it.
6. The new Code of Practice replaced the five stages with *School/Early Years Action*, *School/Early Years Action Plus* and Statements of SEN. The effect of this change has been to reduce the number of pupils recorded as having SEN without statements. Numbers of children with SEN without statements reported in 2003 and later are not directly comparable with earlier years.
7. In 2004 information was collected from schools on pupils at *School Action Plus* and those pupils with statements of SEN about their main or primary need and, if appropriate, their secondary need.

8. Pupil numbers shown in the tables are rounded to the nearest 10, therefore totals may not always equal the sum of there component parts.
9. Further information, including LEA level tables and analyses on attainment by SEN, will be published on the Department's website at <http://www.dfes.gov.uk/rsgateway/DB/SBU/b000537/index.shtml>.

**Public enquiries** about the information in this Statistical Release should be e-mailed to [schools.statistics@dfes.gsi.gov.uk](mailto:schools.statistics@dfes.gsi.gov.uk)

**TABLE 1a**  
**NUMBER OF PUPILS WITH STATEMENTS OF SPECIAL EDUCATIONAL NEEDS (SEN) BY TYPE OF SCHOOL**  
2000-2004  
Position in January each year  
England

	2000	2001 (estimates) (6)	2002 (7)	2003 (7)	2004 (7)
<b>ALL SCHOOLS</b>					
Pupils with statements	252,860	258,200	248,980	250,550	247,590
Pupils on roll	8,345,820	8,374,100	8,369,080	8,366,780	8,334,880
Incidence (%) (1)	3.0	3.1	3.0	3.0	3.0
<b>MAINTAINED SCHOOLS</b>					
Nursery					
Pupils with statements	480	600	550	550	460
Pupils on roll	46,330	45,000	42,370	40,480	38,970
Incidence (%) (1)	1.0	1.3	1.3	1.4	1.2
Placement (%) (2)	0.2	0.2	0.2	0.2	0.2
Primary					
Pupils with statements	72,530	75,300	70,730	71,040	69,610
Pupils on roll	4,435,350	4,406,200	4,363,340	4,309,030	4,252,540
Incidence (%) (1)	1.6	1.7	1.6	1.6	1.6
Placement (%) (2)	28.7	29.1	28.4	28.4	28.1
Secondary					
Pupils with statements	79,790	82,100	78,610	79,320	78,480
Pupils on roll	3,181,810	3,231,800	3,264,090	3,308,030	3,324,950
Incidence (%) (1)	2.5	2.5	2.4	2.4	2.4
Placement (%) (2)	31.6	31.8	31.6	31.7	31.7
Special (3)(4)					
Pupils with statements	86,880	87,400	85,800	85,800	84,250
Pupils on roll	91,800	91,000	89,800	88,930	86,930
Incidence (%) (1)	94.6	96.1	95.6	96.5	96.9
Placement (%) (2)	34.4	33.9	34.5	34.2	34.0
Pupil Referral Units (4)					
Pupils with statements	1,770	1,800	1,840	2,010	2,300
Pupils on roll	8,480	9,300	9,960	12,010	13,040
Incidence (%) (1)	20.8	19.4	18.5	16.8	17.6
Placement (%) (2)	0.7	0.7	0.7	0.8	0.9
<b>OTHER SCHOOLS</b>					
Independent (5)					
Pupils with statements	6,820	6,600	6,970	6,990	7,800
Pupils on roll	577,270	586,200	594,860	603,340	613,620
Incidence (%) (1)	1.2	1.1	1.2	1.2	1.3
Placement (%) (2)	2.7	2.6	2.8	2.8	3.1
Non-Maintained Special (4)					
Pupils with statements	4,610	4,500	4,490	4,840	4,700
Pupils on roll	4,770	4,600	4,670	4,950	4,840
Incidence (%) (1)	96.6	96.1	96.0	97.8	97.2
Placement (%) (2)	1.8	1.7	1.8	1.9	1.9

Source: Annual Schools Census

(1) Incidence of pupils - the number of pupils with statements expressed as a proportion of the number of pupils on roll.

(2) Placement of pupils - the number of pupils with statements expressed as a proportion of the number of pupils with statements in all schools.

(3) Including general and special hospital schools.

(4) Excluding dually registered pupils.

(5) Including Direct Grant Nursery Schools and City Technology Colleges and Academies from 2003.

(6) Estimates were made for January 2001 because the data for SEN are known to be incomplete.

(7) From 2002 data may not be comparable with previous years. See Notes to Editor 3.

Totals may not appear to equal the sum of the component parts because numbers have been rounded to the nearest 10.

**TABLE 1b**  
**NUMBER OF PUPILS WITH SPECIAL EDUCATIONAL NEEDS (SEN) WITHOUT STATEMENTS BY TYPE OF SCHOOL**  
2000-2004  
Position in January each year  
England

	2000	2001 (estimates) (8)	2002 (9)	2003 (9)	2004 (9)
<b>ALL SCHOOLS (1)</b>					
Pupils with SEN without statements	1,465,110	1,556,160	1,402,000	1,169,780	1,197,490
Pupils on roll	8,249,250	8,374,100	8,364,220	8,366,560	8,334,680
Incidence (%) (2)	17.8	18.6	16.8	14.0	14.4
<b>MAINTAINED SCHOOLS</b>					
<b>Nursery</b>					
Pupils with SEN without statements	5,280	5,340	4,940	4,460	4,270
Pupils on roll	46,330	45,000	42,370	40,480	38,970
Incidence (%) (2)	11.4	11.9	11.7	11.0	11.0
Placement (%) (3)	0.4	0.3	0.4	0.4	0.4
<b>Primary</b>					
SEN stage - <i>school action</i>	..	..	..	475,290	467,020
SEN stage - <i>school action plus</i> (4)	..	..	..	209,810	218,680
Pupils with SEN without statements	885,950	927,000	834,140	685,100	685,700
Pupils on roll	4,435,350	4,406,200	4,363,340	4,309,030	4,252,540
Incidence (%) (2)	20.0	21.0	19.1	15.9	16.1
Placement (%) (3)	60.5	59.6	59.6	58.6	57.3
<b>Secondary</b>					
SEN stage - <i>school action</i>	..	..	..	308,870	318,660
SEN stage - <i>school action plus</i> (4)	..	..	..	121,210	131,470
Pupils with SEN without statements	541,410	586,300	519,120	430,080	450,120
Pupils on roll	3,181,810	3,231,800	3,264,090	3,308,030	3,324,950
Incidence (%) (2)	17.0	18.1	15.9	13.0	13.5
Placement (%) (3)	37.0	37.7	37.1	36.8	37.6
<b>Special (1)(5)</b>					
SEN stage - <i>school action</i>	..	..	..	180	170
SEN stage - <i>school action plus</i> (4)	..	..	..	1,710	1,630
Pupils with SEN without statements	..	..	2,410	1,890	1,800
Pupils on roll	..	..	89,600	88,720	86,730
Incidence (%) (2)	..	..	2.7	2.1	2.1
Placement (%) (3)	..	..	0.2	0.2	0.1
<b>Pupil Referral Units (5)(6)</b>					
Pupils with SEN without statements	4,430	4,768	4,940	5,600	6,440
Pupils on roll	8,480	9,300	9,960	12,010	13,040
Incidence (%) (2)	52.2	51.3	49.6	46.7	49.4
Placement (%) (3)	0.3	0.3	0.4	0.5	0.5
<b>OTHER SCHOOLS</b>					
<b>Independent (7)</b>					
Pupils with SEN without statements	28,050	32,750	36,450	42,610	49,140
Pupils on roll	577,270	586,200	594,860	603,340	613,620
Incidence (%) (2)	4.9	5.6	6.1	7.1	8.0
Placement (%) (3)	1.9	2.1	2.6	3.6	4.1
<b>Non-Maintained Special (5)</b>					
SEN stage - <i>school action</i>	..	..	..	10	#
SEN stage - <i>school action plus</i> (4)	..	..	..	30	20
Pupils with SEN without statements	..	..	..	40	30
Pupils on roll	..	..	..	4,950	4,840
Incidence (%) (2)	..	..	..	0.7	0.5
Placement (%) (3)	..	..	..	0.0	0.0

Source: Annual Schools Census

(1) Excludes general hospital schools. Data for pupils with SEN without statements is not collected from these schools.

(2) Incidence of pupils - the number of pupils with SEN without statements expressed as a proportion of pupils on roll.

(3) Placement of pupils - the number of pupils with SEN without statements expressed as a proportion of pupils with SEN without statements in all schools.

(4) May include some pupils recorded at statutory assessment stage.

(5) Excludes dually registered pupils.

(6) Includes pupils with other providers.

(7) Including Direct Grant Nursery schools, City Technology Colleges and Academies from 2003.

(8) Estimates were made for January 2001 because the data for SEN are known to be incomplete.

(9) From 2002 data may not be comparable with previous years. See Notes to Editor 3 and 6.

# Less than 5.

.. Not available.

Totals may not appear to equal the sum of the component parts because numbers have been rounded to the nearest 10.

**TABLE 2**  
**EDUCATION ARRANGEMENTS, ASSESSMENT AND PLACEMENT OF CHILDREN FOR WHOM**  
**LOCAL EDUCATION AUTHORITIES MAINTAIN A STATEMENT OF SEN**  
 England

<b>Children with statements in January 2004</b>	<b>Number of children</b>
Total number of children with statements	
(a) Under 5 years of age	9,810
(b) Aged 5-10	95,910
(c) Aged 11-15	138,440
(d) Aged 16-19	16,900
Total of (a) to (d)	261,070
Total number of children with statements receiving provision in:	
(a) registered early years education settings	1,090
(b) resourced provision/units/special classes in maintained mainstream schools	20,290
(c) maintained mainstream schools	135,830
(d) maintained special schools	85,060
(e) non-maintained special schools	3,790
(f) independent special schools	6,520
(g) other independent schools	1,350
(h) hospital schools	120
(i) pupil referral units	2,030
Total of (a) to (i)	256,070
Total number of children with statements educated other than in school	
(a) pupils permanently excluded and not yet placed elsewhere	270
(b) other arrangements made by the Local Education Authority	2,480
(c) other arrangements made by the parents	1,070
Total of (a) to (c)	3,820
<hr/>	
<b>Assessment and placement of children with new statements during 2003</b>	<b>Number of children</b>
Children for whom statements were made for the first time during the calendar year 2003	
(a) Under 5 years of age	6,860
(b) Aged 5-10	14,650
(c) Aged 11-15	7,110
(d) Aged 16-19	160
Total of (a) to (d)	28,780
Children for whom statements were newly made in 2003 placed in:	
(a) registered early years education settings	820
(b) resourced provision/units/special classes in maintained mainstream schools	2,060
(c) maintained mainstream schools (including foundation)	19,280
(d) maintained special schools (including foundation schools)	4,960
(e) non-maintained special schools	160
(f) independent special schools	360
(g) other independent schools	140
(h) hospital schools (including foundation schools)	30
(i) Pupil Referral Units	300
Total of (a) to (i)	28,090
Children for whom statements were newly made in 2003 and educated other than in school:	
(a) pupils permanently excluded and not yet placed elsewhere	50
(b) other arrangements made by the Local Education Authority	260
(c) other arrangements made by the parents	160
Total of (a) to (c)	480
Children assessed under Section 323 of the Education Act 1996 during the calendar year 2003 for whom no statement was issued	1,590
Total children assessed for SEN during 2003	30,370
Children with statements made prior to 1 January 2003 who transferred during 2003	
(a) from mainstream schools to special or independent schools	5,100
(b) from special or independent schools to mainstream schools	1,230
Children whose statements have been reviewed and discontinued in 2003:	
(a) transferred to another Local Education Authority	5,720
(b) special needs are being met without a statement	2,500
(c) other	920
Total of (a) to (c)	9,140
Children whose statements have been discontinued in the calendar year 2003 as they have left school (aged 16 and over)	23,790

*Source: SEN 2 Survey 2004*

*Totals may not appear to equal the sum of the component parts because numbers have been rounded to the nearest 10.*

**TABLE 3a**  
**ASSESSMENT AND PLACEMENT OF CHILDREN WITH NEW STATEMENTS OF SEN**  
1997-2003  
England

	1997(1)		1998		1999		2000		2001		2002		2003	
	Number	%	Number	%	Number	%	Number	%	Number	%	Number	%	Number	%
<b>Total children for whom a statement was made for the first time in calendar year</b>	<b>35,650</b>	<b>100.0</b>	<b>36,180</b>	<b>100.0</b>	<b>35,420</b>	<b>100.0</b>	<b>33,750</b>	<b>100.0</b>	<b>32,470</b>	<b>100.0</b>	<b>30,720</b>	<b>100.0</b>	<b>28,780</b>	<b>100.0</b>
Placement in:														
Registered early years education settings	.	.	.	.	.	.	.	.	.	.	.	.	820	2.8
Units attached to maintained mainstream schools	.	.	.	.	.	.	.	.	2,430	7.5	2,260	7.4	2,060	7.1
Maintained mainstream schools	25,140	70.5	26,780	74.0	26,330	74.3	25,510	75.6	22,350	68.8	21,090	68.7	19,280	67.0
Maintained Special schools	7,560	21.2	7,050	19.5	6,470	18.3	5,990	17.7	5,730	17.6	5,520	18.0	4,960	17.2
Non-Maintained Special schools	250	0.7	210	0.6	200	0.6	160	0.5	160	0.5	140	0.5	160	0.6
Independent special schools	.	.	.	.	.	.	.	.	490	1.5	440	1.4	360	1.2
Other independent schools	.	.	.	.	.	.	.	.	230	0.7	220	0.7	140	0.5
Independent schools	640	1.8	550	1.5	620	1.8	600	1.8	.	.	.	.	.	.
Hospital schools	20	0.1	20	0.1	20	0.1	10	0.0	30	0.1	10	0.0	30	0.1
Pupil Referral Units	290	0.8	290	0.8	260	0.7	240	0.7	290	0.9	290	0.9	300	1.0
Pupil permanently excluded and not yet placed	.	.	.	.	.	.	.	.	90	0.3	60	0.2	50	0.2
Other (LEA)	400	1.1	370	1.0	600	1.7	480	1.4	480	1.5	490	1.6	260	0.9
Other (parents)	270	0.8	200	0.6	160	0.5	130	0.4	200	0.6	210	0.7	160	0.6
Awaiting provision	1,080	3.0	710	2.0	760	2.1	610	1.8	.	.	.	.	210	0.7
<b>Total</b>	<b>35,650</b>	<b>100.0</b>	<b>36,180</b>	<b>100.0</b>	<b>35,420</b>	<b>100.0</b>	<b>33,750</b>	<b>100.0</b>	<b>32,470</b>	<b>100.0</b>	<b>30,720</b>	<b>100.0</b>	<b>28,780</b>	<b>100.0</b>
Children assessed during the calendar year for whom no statement was issued	1,690	..	1,650	..	1,650	..	1,580	..	1,520	..	1,390	..	1,590	..

Source: SEN 2 surveys 1998 - 2004

(1) Excludes Staffordshire in 1997.

. Not applicable

Totals may not appear to equal the sum of the component parts because numbers have been rounded to the nearest 10.

**TABLE 3b**  
**PLACEMENT OF CHILDREN WITH A STATEMENT MAINTAINED BY THE AUTHORITIES**  
 2002 - 2004  
 England

	2002		2003		2004	
	Number	%	Number	%	Number	%
<b>Total number of children for whom the authorities maintain a statement<sup>1</sup></b>	<b>264,850</b>	<b>100.0</b>	<b>263,680</b>	<b>100.0</b>	<b>261,070</b>	<b>100.0</b>
Placement in:						
Registered early years education settings	.	.	.	.	1,090	0.4
Units attached to maintained mainstream schools	19,530	7.4	19,540	7.4	20,290	7.8
Maintained mainstream schools	140,640	53.1	139,320	52.8	135,830	52.0
Maintained Special schools	86,610	32.7	86,450	32.8	85,060	32.6
Non-Maintained Special schools	3,780	1.4	3,860	1.5	3,790	1.5
Independent special schools	6,300	2.4	6,670	2.5	6,520	2.5
Other independent schools	1,390	0.5	1,240	0.5	1,350	0.5
Hospital schools	190	0.1	120	0.0	120	0.0
Pupil Referral Units	1,790	0.7	1,910	0.7	2,030	0.8
Total number of pupils with statements educated other than in school:						
Pupils permanently excluded and not yet placed elsewhere	590	0.2	400	0.2	270	0.1
Other arrangements made by the Local Education Authority	3,080	1.2	3,040	1.2	2,480	0.9
Other arrangements made by the parents	970	0.4	1,140	0.4	1,070	0.4
Awaiting provision	.	.	.	.	1,180	0.5

Source: SEN 2 Surveys 2002 - 2004

. Not applicable

Totals may not appear to equal the sum of the component parts because numbers have been rounded to the nearest 10.

**TABLE 4a**  
**MAINTAINED PRIMARY SCHOOLS (1):**  
**NUMBER OF SCHOOLS BY PERCENTAGE OF PUPILS WITH SEN (2)**  
 January 2004

	Pupils with statements of SEN								
	Up to 2%		2% up to 5%		5% up to 10%		10% and above		Total number of schools
	Number of schools	%(3)	Number of schools	%(3)	Number of schools	%(3)	Number of schools	%(3)	
<b>England</b>	<b>12,520</b>	<b>70.5</b>	<b>4,424</b>	<b>24.9</b>	<b>700</b>	<b>3.9</b>	<b>118</b>	<b>0.7</b>	<b>17,762</b>
North East	697	73.4	204	21.5	38	4.0	10	1.1	949
North West	1,774	67.2	706	26.8	136	5.2	23	0.9	2,639
Yorkshire and the Humber	1,279	66.6	569	29.6	65	3.4	8	0.4	1,921
East Midlands	1,217	70.4	419	24.2	84	4.9	9	0.5	1,729
West Midlands	1,395	73.7	437	23.1	54	2.9	6	0.3	1,892
East of England	1,516	72.7	485	23.3	73	3.5	11	0.5	2,085
London	1,289	69.7	479	25.9	68	3.7	13	0.7	1,849
Inner London	469	66.8	206	29.3	20	2.8	7	1.0	702
Outer London	820	71.5	273	23.8	48	4.2	6	0.5	1,147
South East	2,036	74.9	566	20.8	90	3.3	25	0.9	2,717
South West	1,317	66.5	559	28.2	92	4.6	13	0.7	1,981

	Pupils with SEN (4)										
	Up to 5%		5% up to 25%		25% up to 35%		35% up to 50%		50% and above		
	Number of schools	%(3)	Number of schools	%(3)	Number of schools	%(3)	Number of schools	%(3)	Number of schools	%(3)	
<b>England</b>	<b>679</b>	<b>3.8</b>	<b>13,684</b>	<b>77.0</b>	<b>2,513</b>	<b>14.1</b>	<b>804</b>	<b>4.5</b>	<b>82</b>	<b>0.5</b>	<b>17,762</b>
North East	38	4.0	704	74.2	138	14.5	64	6.7	5	0.5	949
North West	122	4.6	2,035	77.1	356	13.5	114	4.3	12	0.5	2,639
Yorkshire and the Humber	103	5.4	1,519	79.1	240	12.5	54	2.8	5	0.3	1,921
East Midlands	79	4.6	1,343	77.7	229	13.2	69	4.0	9	0.5	1,729
West Midlands	76	4.0	1,491	78.8	245	12.9	78	4.1	2	0.1	1,892
East of England	49	2.4	1,701	81.6	255	12.2	71	3.4	9	0.4	2,085
London	31	1.7	1,353	73.2	352	19.0	106	5.7	7	0.4	1,849
Inner London	5	0.7	485	69.1	158	22.5	51	7.3	3	0.4	702
Outer London	26	2.3	868	75.7	194	16.9	55	4.8	4	0.3	1,147
South East	97	3.6	1,994	73.4	423	15.6	174	6.4	29	1.1	2,717
South West	84	4.2	1,544	77.9	275	13.9	74	3.7	4	0.2	1,981

Source: Annual Schools Census

(1) Includes middle schools as deemed.

(2) Schools banded by the proportion of school population with SEN.

(3) Number of primary schools by proportion of school population with SEN expressed as a percentage of all primary schools.

(4) Pupils with SEN include both pupils with statements and those identified by schools as having SEN who do not have statements.

**TABLE 4b**  
**MAINTAINED SECONDARY SCHOOLS (1):**  
**NUMBER OF SCHOOLS BY PERCENTAGE OF PUPILS WITH SEN (2)**  
January 2004

	Pupils with statements of SEN									
	Up to 2%		2% up to 5%		5% up to 10%		10% and above		Total number of schools	
	Number of schools	%(3)	Number of schools	%(3)	Number of schools	%(3)	Number of schools	%(3)		
<b>England</b>	<b>1,474</b>	<b>43.2</b>	<b>1,679</b>	<b>49.3</b>	<b>236</b>	<b>6.9</b>	<b>20</b>	<b>0.6</b>	<b>3,409</b>	
North East	91	43.1	107	50.7	11	5.2	2	0.9	211	
North West	195	41.0	241	50.6	34	7.1	6	1.3	476	
Yorkshire and the Humber	111	33.9	187	57.2	29	8.9	0	0.0	327	
East Midlands	123	38.8	162	51.1	31	9.8	1	0.3	317	
West Midlands	153	36.9	223	53.7	35	8.4	4	1.0	415	
East of England	229	53.6	177	41.5	20	4.7	1	0.2	427	
London	148	36.5	232	57.3	23	5.7	2	0.5	405	
Inner London	33	25.0	88	66.7	10	7.6	1	0.8	132	
Outer London	115	42.1	144	52.7	13	4.8	1	0.4	273	
South East	266	53.0	205	40.8	28	5.6	3	0.6	502	
South West	158	48.0	145	44.1	25	7.6	1	0.3	329	

	Pupils with SEN (4)										
	Up to 5%		5% up to 25%		25% up to 35%		35% up to 50%		50% and above		Total number of schools
	Number of schools	%(3)	Number of schools	%(3)	Number of schools	%(3)	Number of schools	%(3)	Number of schools	%(3)	
<b>England</b>	<b>241</b>	<b>7.1</b>	<b>2,571</b>	<b>75.4</b>	<b>407</b>	<b>11.9</b>	<b>161</b>	<b>4.7</b>	<b>29</b>	<b>0.9</b>	<b>3,409</b>
North East	6	2.8	176	83.4	23	10.9	6	2.8	0	0.0	211
North West	42	8.8	356	74.8	56	11.8	18	3.8	4	0.8	476
Yorkshire and the Humber	15	4.6	255	78.0	37	11.3	18	5.5	2	0.6	327
East Midlands	18	5.7	238	75.1	43	13.6	16	5.0	2	0.6	317
West Midlands	25	6.0	328	79.0	49	11.8	11	2.7	2	0.5	415
East of England	20	4.7	356	83.4	37	8.7	11	2.6	3	0.7	427
London	29	7.2	271	66.9	68	16.8	31	7.7	6	1.5	405
Inner London	3	2.3	84	63.6	29	22.0	12	9.1	4	3.0	132
Outer London	26	9.5	187	68.5	39	14.3	19	7.0	2	0.7	273
South East	57	11.4	329	65.5	65	12.9	42	8.4	9	1.8	502
South West	29	8.8	262	79.6	29	8.8	8	2.4	1	0.3	329

Source: Annual Schools Census

(1) Includes middle schools as deemed.

(2) Schools banded by the proportion of school population with SEN.

(3) Number of secondary schools by proportion of school population with SEN expressed as a percentage of all secondary schools.

(4) Pupils with SEN include both pupils with statements and those identified by schools as having SEN who do not have statements.

**TABLE 5**  
**MAINTAINED PRIMARY AND SECONDARY(1)(2): NUMBER OF PUPILS WITH SPECIAL EDUCATIONAL NEEDS (SEN) BY AGE AND GENDER (3)**  
 January 2004  
 England

	SEN Pupils without statements						Pupils with statements					
	Boys		Girls		Total		Boys		Girls		Total	
	Number of pupils	Percentage of school population (4)	Number	Percentage of school population (4)	Number	Percentage of school population (4)	Number	Percentage of school population (4)	Number	Percentage of school population (4)	Number	Percentage of school population (4)
Pupils Aged:												
2 and under	300	1.8	150	0.9	450	1.3	30	0.1	20	0.1	50	0.1
3	6,870	5.5	3,120	2.6	9,980	4.1	480	0.4	300	0.3	790	0.3
4	26,290	9.4	12,060	4.5	38,350	7.0	3,080	1.1	1,290	0.5	4,360	0.8
5	54,950	19.0	27,660	10.0	82,600	14.6	4,890	1.7	2,010	0.7	6,900	1.2
6	69,620	23.5	36,040	12.7	105,660	18.2	6,180	2.1	2,440	0.9	8,630	1.5
7	71,750	24.6	38,750	13.9	110,500	19.4	6,890	2.4	2,720	1.0	9,610	1.7
8	74,550	25.3	41,350	14.7	115,900	20.1	8,060	2.7	3,170	1.1	11,230	1.9
9	73,960	24.7	41,760	14.5	115,710	19.7	9,620	3.2	3,490	1.2	13,110	2.2
10	71,730	23.9	40,820	14.1	112,560	19.1	10,950	3.7	4,050	1.4	15,000	2.5
11	62,920	20.7	37,260	12.8	100,180	16.8	10,660	3.5	3,930	1.3	14,590	2.4
12	59,880	19.7	35,010	11.9	94,890	15.8	11,180	3.7	4,220	1.4	15,390	2.6
13	55,690	18.5	32,280	11.1	87,970	14.9	11,250	3.7	4,270	1.5	15,520	2.6
14	50,730	17.3	29,120	10.1	79,850	13.7	10,920	3.7	4,300	1.5	15,210	2.6
15	44,960	15.5	27,360	9.5	72,320	12.5	10,500	3.6	4,220	1.5	14,710	2.5
16	3,420	3.9	2,640	2.7	6,060	3.3	1,310	1.5	680	0.7	1,990	1.1
17	1,420	2.2	1,040	1.4	2,460	1.7	500	0.8	280	0.4	780	0.6
18	180	2.8	150	2.8	340	2.8	130	2.0	60	1.1	190	1.6
19+	20	3.5	20	4.2	40	3.8	10	2.4	0	0.8	20	1.6
<b>Total All Ages</b>	<b>729,240</b>	<b>19.0</b>	<b>406,580</b>	<b>10.9</b>	<b>1,135,830</b>	<b>15.0</b>	<b>106,650</b>	<b>2.8</b>	<b>41,440</b>	<b>1.1</b>	<b>148,090</b>	<b>2.0</b>

Source: Annual Schools Census

- (1) Excludes general hospital schools.  
 (2) Includes middle schools as deemed.  
 (3) Age as at 31 August 2003.  
 (4) Number of SEN pupils expressed as a percentage of all pupils in same primary schools of same age and gender.

Totals may not appear to equal the sum of the component parts because numbers have been rounded to the nearest 10.

**TABLE 6a****MAINTAINED PRIMARY SCHOOLS (1): NUMBER OF PUPILS WITH SPECIAL EDUCATIONAL NEEDS BY NATIONAL CURRICULUM YEAR GROUP**

January 2004

England

	Total number of pupils	Pupils with statements		SEN pupils without statements				Total number of pupils with SEN without a statement	
		SEN pupils - Statemented		SEN pupils - <i>school action</i>		SEN pupils - <i>school action plus</i> (2)			
		Number	% (3)	Number	% (3)	Number	% (3)	Number	% (3)
National Curriculum Year Group:									
Nursery Year 1	53,140	110	0.2	790	1.5	770	1.5	1,560	2.9
Nursery Year 2	230,090	900	0.4	5,310	2.3	4,250	1.8	9,560	4.2
Reception	542,250	4,750	0.9	23,920	4.4	14,500	2.7	38,420	7.1
1	568,050	7,160	1.3	59,680	10.5	23,120	4.1	82,810	14.6
2	580,210	8,700	1.5	74,630	12.9	30,970	5.3	105,600	18.2
3	568,840	9,570	1.7	76,020	13.4	34,340	6.0	110,360	19.4
4	576,690	11,180	1.9	78,470	13.6	37,470	6.5	115,940	20.1
5	562,500	12,540	2.2	74,600	13.3	36,760	6.5	111,360	19.8
6	555,810	14,240	2.6	71,650	12.9	35,550	6.4	107,200	19.3
7	14,300	420	2.9	1,880	13.1	920	6.5	2,800	19.6
8 and above	660	10	2.0	60	9.7	30	4.2	90	13.9
Not followed	30	20	80.0	#	3.3	#	10.0	#	13.3
<b>Total</b>	<b>4,252,540</b>	<b>69,610</b>	<b>1.6</b>	<b>467,020</b>	<b>11.0</b>	<b>218,680</b>	<b>5.1</b>	<b>685,700</b>	<b>16.1</b>

*Source: Annual Schools Census*

(1) Includes middle schools as deemed.

(2) May include some pupils recorded at statutory assessment stage.

(3) Number of pupils at each SEN stage expressed as a percentage of total pupils according to year group.

# Less than 5.

*Totals may not appear to equal the sum of the component parts because numbers have been rounded to the nearest 10.*

**TABLE 6b****MAINTAINED SECONDARY SCHOOLS (1): NUMBER OF PUPILS WITH SPECIAL EDUCATIONAL NEEDS BY NATIONAL CURRICULUM YEAR GROUP**

January 2004

England

	Total number of pupils	Pupils with statements		SEN pupils without statements				Total number of pupils with SEN without a statement	
		SEN pupils - Statemented		SEN pupils - <i>school action</i>		SEN pupils - <i>school action plus (2)</i>			
		Number	% (3)	Number	% (3)	Number	% (3)	Number	% (3)
National Curriculum Year Group:									
Nursery, Reception and 1 to 3	310	#	1.3	20	5.8	20	6.4	40	12.2
4	100	#	1.0	20	17.6	10	9.8	30	27.5
5	25,090	510	2.0	2,990	11.9	1,300	5.2	4,290	17.1
6	30,440	700	2.3	3,570	11.7	1,360	4.5	4,920	16.2
7	582,180	14,120	2.4	69,840	12.0	27,710	4.8	97,550	16.8
8	601,250	15,400	2.6	68,000	11.3	27,190	4.5	95,190	15.8
9	592,320	15,530	2.6	62,160	10.5	25,790	4.4	87,940	14.8
10	582,980	15,180	2.6	55,310	9.5	24,610	4.2	79,920	13.7
11	575,070	14,540	2.5	50,220	8.7	21,560	3.7	71,790	12.5
12	189,280	1,700	0.9	4,570	2.4	1,360	0.7	5,930	3.1
13	142,380	750	0.5	1,890	1.3	540	0.4	2,430	1.7
14	3,560	50	1.5	70	2.0	20	0.5	90	2.5
Not followed	#	#	66.7	0	0.0	#	33.3	#	33.3
<b>Total</b>	<b>3,324,950</b>	<b>78,480</b>	<b>2.4</b>	<b>318,660</b>	<b>9.6</b>	<b>131,470</b>	<b>4.0</b>	<b>450,120</b>	<b>13.5</b>

*Source: Annual Schools' Census*

(1) Includes middle schools as deemed.

(2) May include some pupils recorded at statutory assessment stage.

(3) Number of pupils at each SEN stage expressed as a percentage of total pupils according to year group.

# Less than 5.

*Totals may not appear to equal the sum of the component parts because numbers have been rounded to the nearest 10.*

**TABLE 7**  
**MAINTAINED PRIMARY AND SECONDARY SCHOOLS (1): NUMBER AND PERCENTAGE OF PUPILS KNOWN TO BE ELIGIBLE FOR FREE**  
**SCHOOL MEALS BY STAGE OF SEN (2)**

January 2004  
 England

	Maintained Primary			Maintained Secondary		
	Total pupils (2)	No. of pupils known to be eligible for free school meals	% of pupils known to be eligible for free school meals (3)	Total pupils (2)	No. of pupils known to be eligible for free school meals	% of pupils known to be eligible for free school meals (3)
Stage of SEN:						
<b>No Provision</b>	3,497,960	505,990	14.5	2,797,410	332,720	11.9
<b>Total number of pupils with SEN without a statement</b>	686,250	212,150	30.9	450,680	123,340	27.4
<i>School Action</i>	467,230	139,940	30.0	318,820	82,680	25.9
<i>School Action Plus</i> (4)	219,020	72,210	33.0	131,860	40,660	30.8
<b>Statement of SEN</b>	69,990	19,080	27.3	78,700	21,230	27.0
<b>Total SEN (5)</b>	<b>756,240</b>	<b>231,230</b>	<b>30.6</b>	<b>529,380</b>	<b>144,570</b>	<b>27.3</b>

Source: Annual Schools Census

(1) Includes middle schools as deemed.

(2) Includes dually registered pupils and boarding pupils.

(3) Number of pupils known to be eligible for free school meals expressed as a percentage of number (headcount) of pupils in each stage of SEN.

(4) May include some pupils recorded at statutory assessment stage.

(5) Includes pupils with statements, and those identified by schools as having SEN who do not have statements.

Totals may not appear to equal the sum of the component parts because numbers have been rounded to the nearest 10.

**TABLE 8a**  
**MAINTAINED PRIMARY SCHOOLS (1): NUMBER OF PUPILS WITH SPECIAL EDUCATIONAL NEEDS BY ETHNIC GROUP**  
 January 2004  
 England

	Pupils of compulsory school age and above								
	Pupils with statements			SEN pupils without statements					
	Total Pupils	SEN pupils - Statemented	% (3)	SEN pupils - school action	% (3)	SEN pupils - school action plus (2)	% (3)	Total pupils with SEN without statements	% (3)
<b>White</b>	<b>2,814,460</b>	<b>53,910</b>	<b>1.9</b>	<b>350,000</b>	<b>12.4</b>	<b>164,170</b>	<b>5.8</b>	<b>514,170</b>	<b>18.3</b>
White British	2,719,390	52,300	1.9	336,120	12.4	157,890	5.8	494,000	18.2
Irish	13,000	280	2.2	1,650	12.7	840	6.4	2,490	19.1
Traveller of Irish heritage	2,900	80	2.8	870	29.9	620	21.2	1,490	51.1
Any other White background	74,510	1,090	1.5	10,020	13.4	4,000	5.4	14,020	18.8
Gypsy / Roma	4,660	150	3.3	1,350	29.0	840	17.9	2,180	46.9
<b>Mixed</b>	<b>109,260</b>	<b>1,910</b>	<b>1.7</b>	<b>14,080</b>	<b>12.9</b>	<b>6,350</b>	<b>5.8</b>	<b>20,430</b>	<b>18.7</b>
White and Black Caribbean	38,540	700	1.8	5,690	14.8	2,640	6.9	8,330	21.6
White and Black African	10,640	160	1.5	1,430	13.4	620	5.8	2,040	19.2
White and Asian	21,930	340	1.5	2,230	10.2	900	4.1	3,120	14.2
Any other mixed background	38,150	710	1.8	4,740	12.4	2,190	5.7	6,930	18.2
<b>Asian</b>	<b>245,110</b>	<b>3,810</b>	<b>1.6</b>	<b>33,110</b>	<b>13.5</b>	<b>11,130</b>	<b>4.5</b>	<b>44,250</b>	<b>18.1</b>
Indian	75,410	900	1.2	7,710	10.2	2,430	3.2	10,130	13.4
Pakistani	102,480	2,020	2.0	16,410	16.0	5,880	5.7	22,290	21.8
Bangladeshi	42,660	600	1.4	6,520	15.3	1,990	4.7	8,500	19.9
Any other Asian background	24,560	290	1.2	2,480	10.1	840	3.4	3,320	13.5
<b>Black</b>	<b>135,800</b>	<b>2,590</b>	<b>1.9</b>	<b>22,660</b>	<b>16.7</b>	<b>9,930</b>	<b>7.3</b>	<b>32,590</b>	<b>24.0</b>
Black Caribbean	50,900	1,110	2.2	9,080	17.8	4,470	8.8	13,540	26.6
Black African	70,550	1,190	1.7	11,170	15.8	4,370	6.2	15,540	22.0
Any other Black background	14,350	300	2.1	2,410	16.8	1,100	7.7	3,510	24.5
<b>Chinese</b>	<b>11,170</b>	<b>160</b>	<b>1.4</b>	<b>830</b>	<b>7.5</b>	<b>330</b>	<b>3.0</b>	<b>1,160</b>	<b>10.4</b>
<b>Any other ethnic group</b>	<b>32,020</b>	<b>410</b>	<b>1.3</b>	<b>4,430</b>	<b>13.8</b>	<b>1,530</b>	<b>4.8</b>	<b>5,960</b>	<b>18.6</b>
<b>Classified (4)</b>	<b>3,347,820</b>	<b>62,790</b>	<b>1.9</b>	<b>425,120</b>	<b>12.7</b>	<b>193,440</b>	<b>5.8</b>	<b>618,560</b>	<b>18.5</b>
<b>Unclassified (5)</b>	<b>79,970</b>	<b>1,630</b>	<b>2.0</b>	<b>12,270</b>	<b>15.3</b>	<b>6,090</b>	<b>7.6</b>	<b>18,360</b>	<b>23.0</b>
<b>All pupils (6)</b>	<b>3,427,800</b>	<b>64,410</b>	<b>1.9</b>	<b>437,390</b>	<b>12.8</b>	<b>199,530</b>	<b>5.8</b>	<b>636,920</b>	<b>18.6</b>

Source: Annual Schools Census

(1) Includes middle schools as deemed.

(2) May include some pupils recorded at statutory assessment stage.

(3) Percentage of pupils at each stage expressed as a percentage of total pupils according to ethnic group.

(4) Pupils of compulsory school age were classified according to ethnic group.

(5) Information was refused or not obtained.

(6) All pupils of compulsory school age and above according to SEN stage.

Totals may not appear to equal the sum of the component parts because numbers have been rounded to the nearest 10.

**TABLE 8b**  
**MAINTAINED SECONDARY SCHOOLS (1): NUMBER OF PUPILS WITH SPECIAL EDUCATIONAL NEEDS BY ETHNIC GROUP**  
 January 2004  
 England

	Pupils of compulsory school age and above								
	Pupils with statements			SEN pupils without statements					
	Total Pupils	SEN pupils - Stated	% (3)	SEN pupils - <i>school action</i>	% (3)	SEN pupils - <i>school action plus</i> (2)	% (3)	Total pupils with SEN without statements	% (3)
<b>White</b>	<b>2,783,410</b>	<b>67,170</b>	<b>2.4</b>	<b>259,580</b>	<b>9.3</b>	<b>109,060</b>	<b>3.9</b>	<b>368,640</b>	<b>13.2</b>
White British	2,702,320	65,470	2.4	250,820	9.3	105,340	3.9	356,160	13.2
Irish	13,080	270	2.1	1,220	9.4	550	4.2	1,780	13.6
Traveller of Irish heritage	1,020	70	6.6	230	22.4	200	19.7	430	42.1
Any other White background	65,250	1,210	1.9	6,940	10.6	2,660	4.1	9,590	14.7
Gypsy / Roma	1,750	150	8.4	370	21.0	310	17.6	680	38.7
<b>Mixed</b>	<b>72,330</b>	<b>1,650</b>	<b>2.3</b>	<b>7,670</b>	<b>10.6</b>	<b>3,410</b>	<b>4.7</b>	<b>11,070</b>	<b>15.3</b>
White and Black Caribbean	26,120	700	2.7	3,330	12.7	1,560	6.0	4,880	18.7
White and Black African	6,460	150	2.3	710	11.0	300	4.7	1,020	15.7
White and Asian	14,390	250	1.7	1,070	7.5	430	3.0	1,500	10.4
Any other mixed background	25,370	550	2.2	2,560	10.1	1,120	4.4	3,680	14.5
<b>Asian</b>	<b>209,320</b>	<b>3,770</b>	<b>1.8</b>	<b>21,380</b>	<b>10.2</b>	<b>5,970</b>	<b>2.9</b>	<b>27,340</b>	<b>13.1</b>
Indian	78,870	1,020	1.3	5,730	7.3	1,350	1.7	7,080	9.0
Pakistani	78,060	1,880	2.4	10,320	13.2	3,000	3.8	13,320	17.1
Bangladeshi	30,790	620	2.0	3,580	11.6	1,070	3.5	4,650	15.1
Any other Asian background	21,590	260	1.2	1,750	8.1	540	2.5	2,290	10.6
<b>Black</b>	<b>108,810</b>	<b>2,480</b>	<b>2.3</b>	<b>15,160</b>	<b>13.9</b>	<b>6,530</b>	<b>6.0</b>	<b>21,690</b>	<b>19.9</b>
Black Caribbean	45,130	1,320	2.9	6,820	15.1	3,310	7.3	10,140	22.5
Black African	50,210	810	1.6	6,540	13.0	2,380	4.7	8,920	17.8
Any other Black background	13,470	350	2.6	1,800	13.4	840	6.2	2,640	19.6
<b>Chinese</b>	<b>12,540</b>	<b>130</b>	<b>1.0</b>	<b>690</b>	<b>5.5</b>	<b>250</b>	<b>2.0</b>	<b>940</b>	<b>7.5</b>
<b>Any other ethnic group</b>	<b>25,920</b>	<b>360</b>	<b>1.4</b>	<b>3,040</b>	<b>11.7</b>	<b>1,070</b>	<b>4.1</b>	<b>4,110</b>	<b>15.8</b>
<b>Classified (4)</b>	<b>3,212,330</b>	<b>75,560</b>	<b>2.4</b>	<b>307,520</b>	<b>9.6</b>	<b>126,280</b>	<b>3.9</b>	<b>433,800</b>	<b>13.5</b>
<b>Unclassified (5)</b>	<b>112,540</b>	<b>2,920</b>	<b>2.6</b>	<b>11,140</b>	<b>9.9</b>	<b>5,190</b>	<b>4.6</b>	<b>16,320</b>	<b>14.5</b>
<b>All pupils (6)</b>	<b>3,324,870</b>	<b>78,480</b>	<b>2.4</b>	<b>318,660</b>	<b>9.6</b>	<b>131,460</b>	<b>4.0</b>	<b>450,120</b>	<b>13.5</b>

Source: Annual Schools Census

- (1) Includes middle schools as deemed.  
 (2) May include some pupils recorded at statutory assessment stage.  
 (3) Percentage of pupils at each stage expressed as a percentage of total pupils according to ethnic group.  
 (4) Pupils of compulsory school age were classified according to ethnic group.  
 (5) Information was refused or not obtained.  
 (6) All pupils of compulsory school age and above according to SEN stage.

Totals may not appear to equal the sum of the component parts because numbers have been rounded to the nearest 10.

**TABLE 9**  
**MAINTAINED PRIMARY, SECONDARY AND SPECIAL SCHOOLS (1): NUMBER AND PERCENTAGE OF PUPILS BY TYPE OF NEED (2)(3)**

As at January 2004  
 England

SEN Stage:	SEN Pupils by their primary type of need (2)(4)															
	Primary Schools (5)				Secondary Schools (5)				All Special Schools (1)				Total			
	School Action Plus		Statement of SEN		School Action Plus		Statement of SEN		School Action Plus		Statement of SEN		School Action Plus		Statement of SEN	
	Number	% (6)	Number	% (6)	Number	% (6)	Number	% (6)	Number	% (6)	Number	% (6)	Number	% (6)	Number	% (6)
Specific Learning Difficulty	36,990	16.9	4,790	7.0	23,750	18.1	17,510	22.3	10	0.7	740	0.8	60,750	17.3	23,040	9.8
Moderate Learning Difficulty	71,540	32.7	13,770	20.0	34,640	26.4	23,450	29.9	140	8.6	28,380	31.9	106,330	30.2	65,600	27.8
Severe Learning Difficulty	3,430	1.6	3,900	5.7	750	0.6	2,320	3.0	390	23.7	21,230	23.9	4,580	1.3	27,450	11.6
Profound & Multiple Learning Difficulty	300	0.1	840	0.0	40	0.0	220	0.3	190	11.7	6,190	7.0	540	0.2	7,250	2.7
Behaviour, Emotional & Social Difficulties	44,120	20.2	8,440	12.3	49,960	38.0	11,980	15.3	240	14.6	12,150	13.7	94,320	26.8	32,570	13.8
Speech, Language and Communications Needs	36,040	16.5	14,080	20.5	4,400	3.3	6,320	8.1	130	7.8	2,910	3.3	40,570	11.5	23,320	9.9
Hearing Impairment	3,110	1.4	2,980	4.3	2,840	2.2	2,290	2.9	50	3.2	1,690	1.9	6,010	1.7	6,950	2.9
Visual Impairment	1,940	0.9	1,580	2.3	1,020	0.8	1,630	2.1	10	0.5	990	1.1	2,970	0.8	4,200	1.8
Multi- Sensory Impairment	280	0.1	230	0.3	70	0.1	110	0.1	#	0.2	170	0.2	350	0.1	510	0.2
Physical Disability	5,180	2.4	6,610	9.6	2,340	1.8	5,200	6.6	190	11.3	5,140	5.8	7,700	2.2	16,960	7.2
Autistic Spectrum Disorder	5,330	2.4	10,610	15.4	1,800	1.4	4,900	6.2	160	10.0	8,450	9.5	7,300	2.1	23,960	10.1
Other Difficulty/Disability	10,400	4.8	1,770	2.6	9,820	7.5	2,550	3.2	130	7.8	860	1.0	20,360	5.8	5,180	2.2
Unclassified (7)	0	0.0	0	0.0	30	0.0	10	0.0	0	0.0	#	0.0	30	0.0	10	0.0
<b>Total</b>	<b>218,680</b>	<b>100.0</b>	<b>69,610</b>	<b>100.0</b>	<b>131,470</b>	<b>100.0</b>	<b>78,480</b>	<b>100.0</b>	<b>1,650</b>	<b>100.0</b>	<b>88,890</b>	<b>100.0</b>	<b>351,800</b>	<b>100.0</b>	<b>236,980</b>	<b>100.0</b>

Source: Annual Schools Census

(1) Includes maintained and non-maintained special schools. Excludes general hospital schools.

(2) Pupils with an SEN status of *School Action Plus* and those pupils with a statement of SEN provided information on their primary need and, if appropriate, their secondary need. Information on primary need only is given here.

(3) See Notes to Editor 7.

(4) Excludes dually registered pupils.

(5) Includes middle schools as deemed.

(6) Number of pupils by their main need expressed as a percentage of all pupils with an SEN status of *School Action Plus* or with a statement of SEN.

(7) Pupils for whom information on type of need is missing.

# Less than 5.

Totals may not appear to equal the sum of the component parts because numbers have been rounded to the nearest 10.